

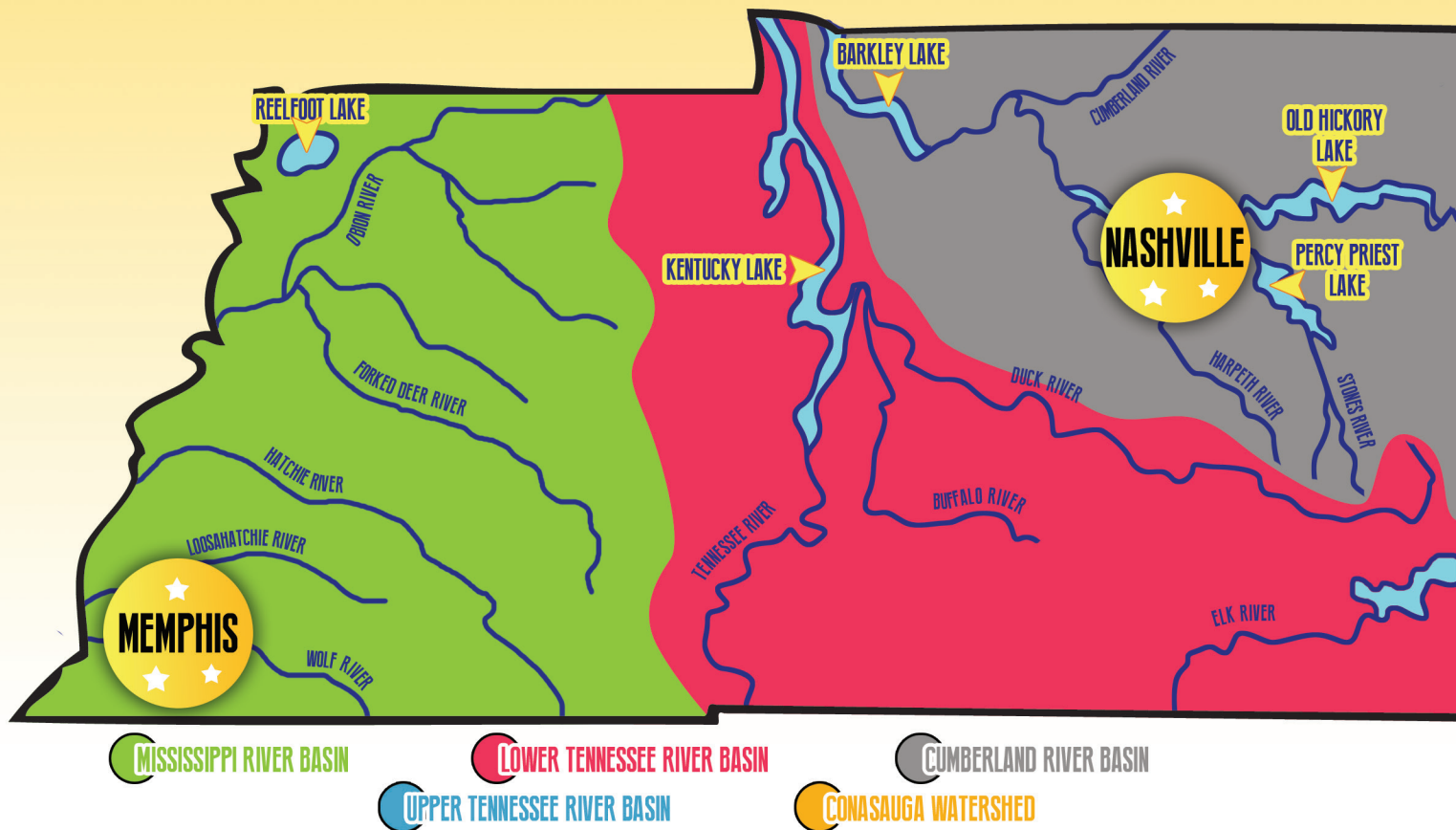
HELP KEEP
OUR WATERS
CLEAN!



TENSI TURTLE'S STORMWATER

activity book

introducing the **WATERSHEDS OF TENNESSEE**

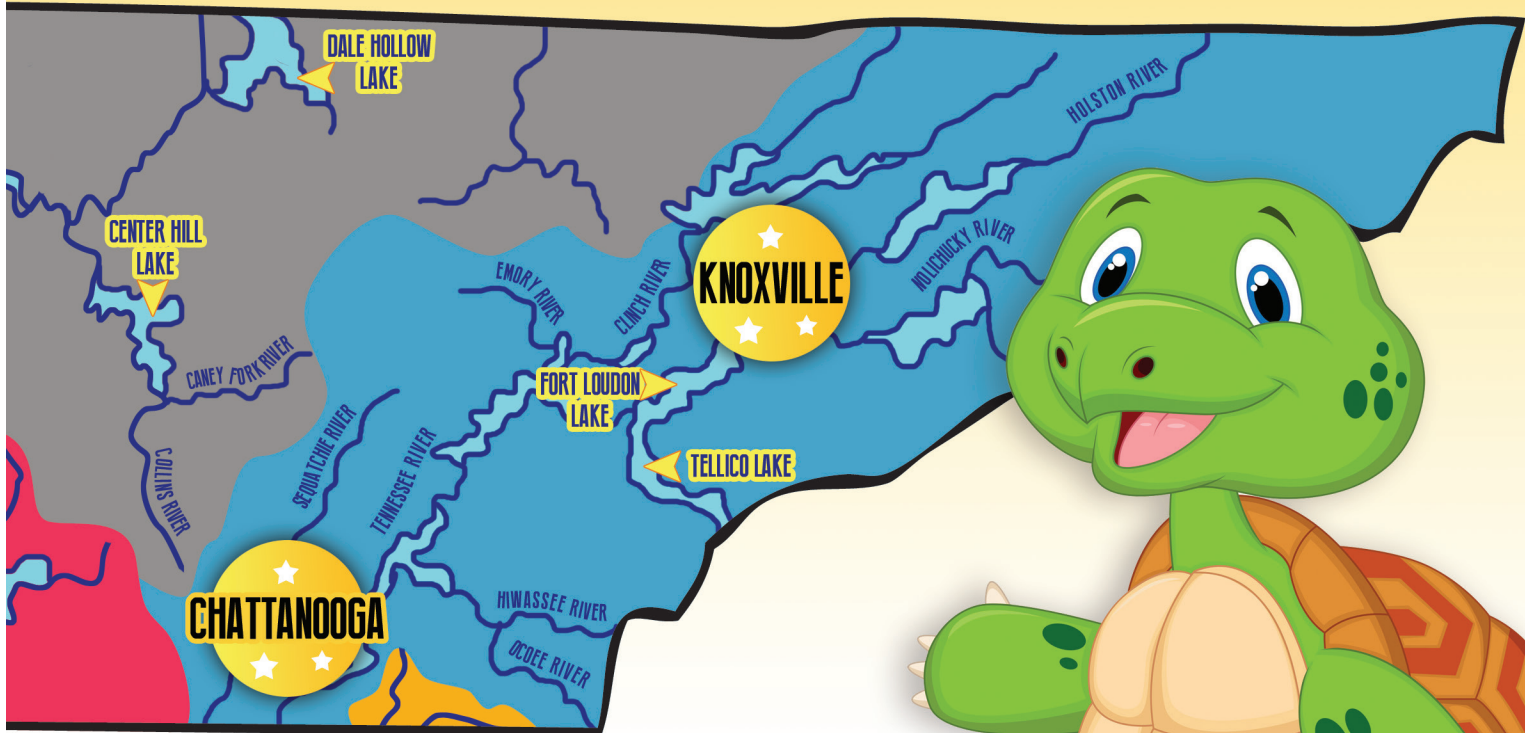


EVERYONE in the world **lives in a watershed.**

A watershed is an area of land that **DRAINS INTO A RIVER,**
STREAM, LAKE, OCEAN OR GROUNDWATER.

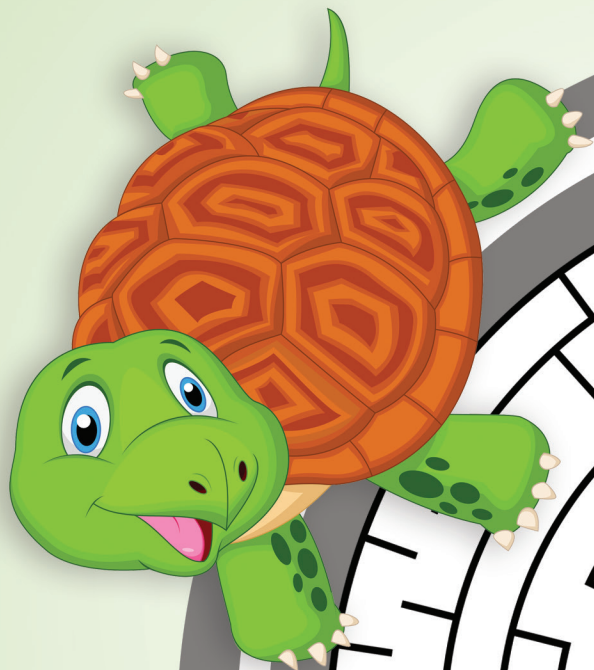
A **group** of watersheds form a **BASIN.**

TENNESSEE'S WATER drains downstream
and ends in the **GULF OF MEXICO**.



TENSI says there are
55 **WATERSHEDS**
in Tennessee

WHAT IS STORMWATER?



**START
HERE**

**STORM
DRAIN**

Water
that falls from
the sky:

... RAIN

... SNOW

... HAIL

... ICE

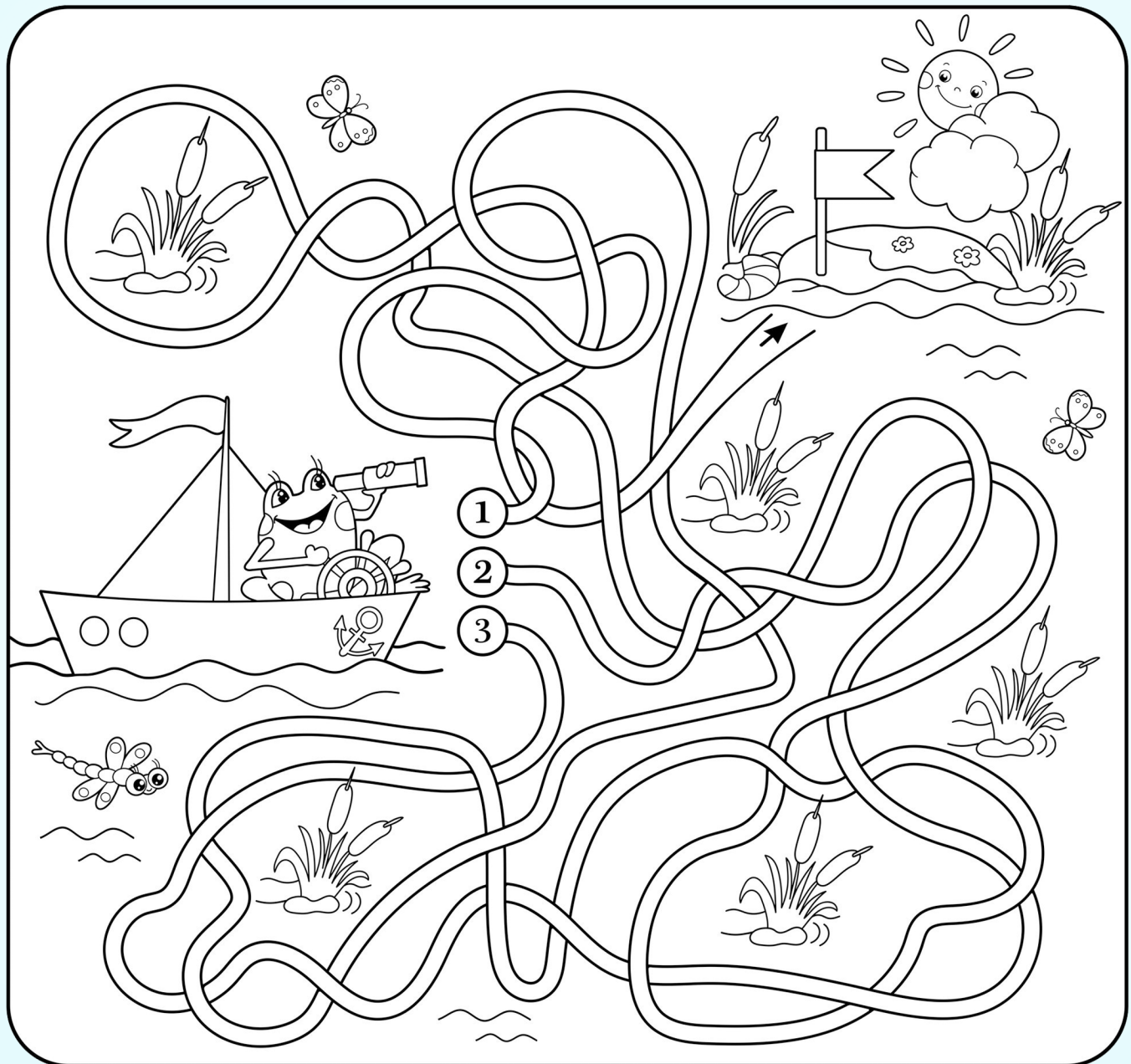
Stormwater
is
WATER
FROM A STORM.

TENSI says
ONLY RAIN
down the
storm drain!

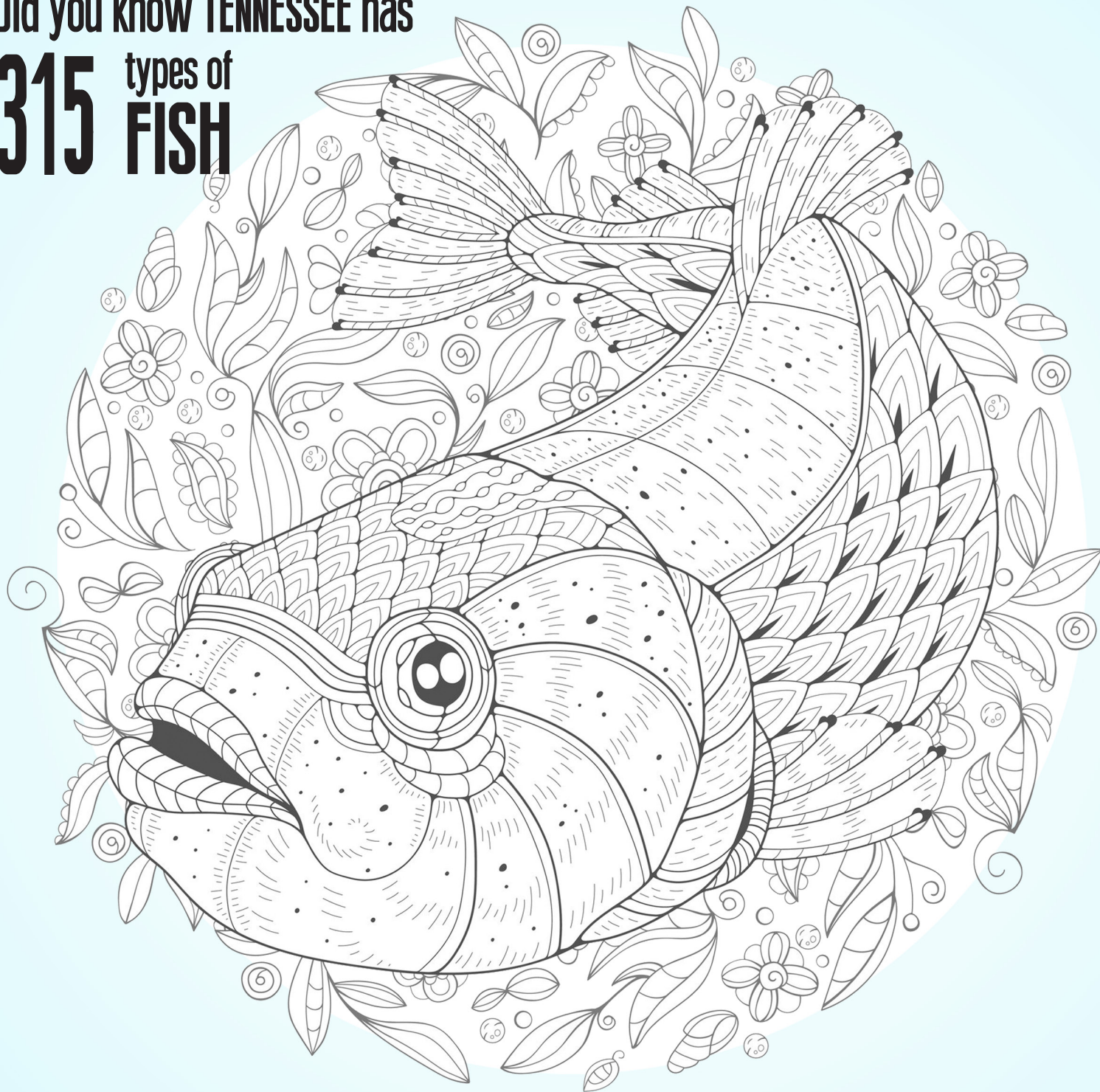


TENSI WANTS YOU TO HELP FROG SAIL TO LAND.

Should Frog take route 1, 2 or 3?



Did you know **TENNESSEE** has
315 types of
FISH

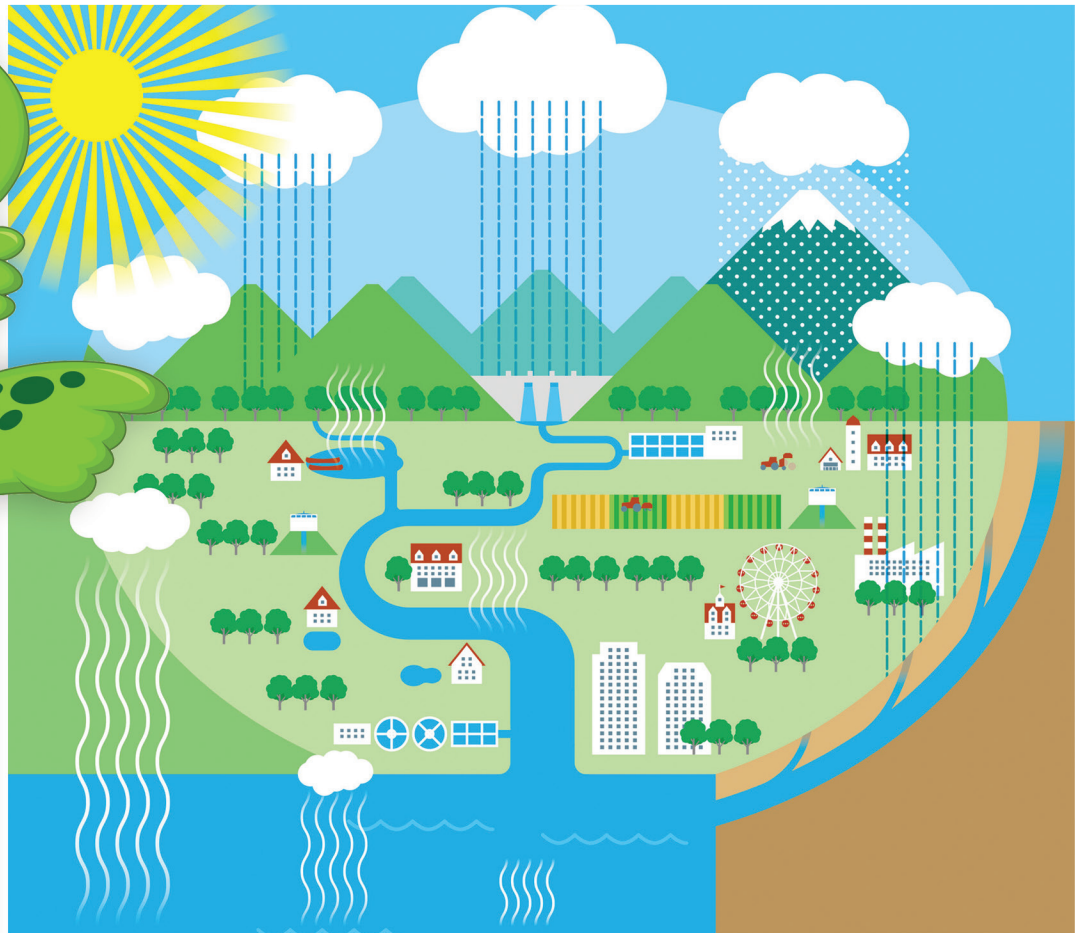


WHERE DOES STORMWATER GO?

When stormwater falls on the sidewalk, roof or parking lot,
it **FLOWS INTO A STORM DRAIN** or **DRAINAGE DITCH**...

...While flowing to one of
these, stormwater can
force pollutants into our
waterways.

POLLUTANTS are things that
MAKE OUR WATER DIRTY.





WATER POLLUTANT EXAMPLES

oil leaking from cars

pet poop

litter

grass from mowing

chemicals from gardens & lawns

STORMWATER is ABSORBED
INTO THE GROUND when it falls
on grass, plants or trees.

WORD SEARCH

X C H R C F F E U R W X O F S
B J L W S C H E M I C A L S A
R T Q P N E S S O L I T T E R
A R N I O A G X L A K E T O B
S V H D W J P P O U S K A W R
B B A S I N I N T K G H Z A K
K M R N X P O L L U T A N T S
N I H Q V G K B K H Q W D E P
Q A D M Z X R F P L L R R R W
I M T A F E U A J T X A I S P
Q U T E N N E S S E E I V H W
J I R K D O T A B S S N E E W
X S X H J T P F K Y J N R D T
T U R T L E H A M R U N O F F
S U O F I S H U S U B Q F E C

STORMWATER eventually
ends up in lakes, rivers,
streams, the ocean
or groundwater.

Basin
Chemicals
Fish
Grass

Lake
Litter
Pollutants
Rain

River
Runoff
Snow
Tennessee

Turtle
Watershed



Did you know **POLLUTED WATER**
CAN HURT WILDLIFE that lives
in Tennessee's waters?

*TENSI wants you to
match the animal
with the name*



SALAMANDER . FROG . OTTER . TURTLE . FISH . SNAIL . HERON . DRAGONFLY

TENSI'S TIPS TO KEEP STORMWATER CLEAN

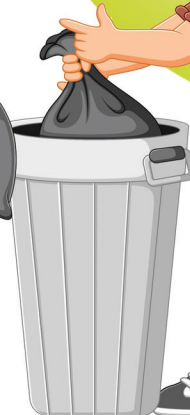
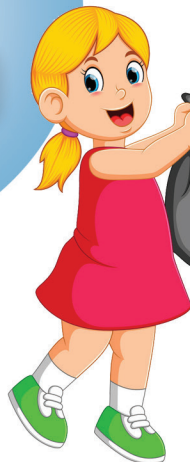
Don't throw anything
down the storm drain

**DON'T
LITTER**



**Pick up
dog poop**

**Tell your parents
if you see someone
put anything down
the storm drain.**



**PICK UP
LITTER**



Help plant a RAIN GARDEN

PLANT A TREE

TELL YOUR
FRIENDS!

Tell parents
to wash cars on
the grass or at
a car wash

REPORT
LITTERING from
cars...

...with the
Tennessee Litter Hotline
1-877-8-LITTER



Online litter hotline



Can you find all
of the litter
polluting the lake?





CLEAN WATER CERTIFICATE OF COMPLETION

CONGRATULATIONS!

You have completed Tensi Turtle's Stormwater Activity booklet.
You are now a certified expert on stormwater pollution prevention.

Share this exciting news with your friends and family.
It takes everyone working together to keep our waters clean.

I, _____,
pledge to protect the water around me by picking up litter, picking up my dog's poop,
not dumping anything down the storm drain and
making sure to tell friends and family what I have learned.



REMEMBER
YOU CAN HELP KEEP
STORMWATER
CLEAN!



THANK YOU FOR KEEPING
TENNESSEE'S WATERWAYS CLEAN!

Copyright © 2020
Tennessee Stormwater Association All rights reserved.
P.O. Box 6550 Maryville, Tennessee 37802