

New Business Welcome Packet

#makeitinMarshall



City of Lewisburg

131 East Church St.
Lewisburg, TN 37091
(931) 359-1544

Lewisburgtn.gov - Lewisburgtn.net
Lewisburgtn.info - Lewisburgtn.dev
Lewisburgtn.com - Lewisburgtn.biz



MARSHALL
COUNTY
TENNESSEE

makeitinmarshall.com | [#makeitinMarshall](https://twitter.com/makeitinMarshall) | [#investinMC](https://twitter.com/investinMC)

Greg Lowe - City of Lewisburg - Director of Economic Development - (931) 993-7499 - greg.lowe@lewisburgtn.gov

New Business Welcome Packet

Table of Contents

[Link to Video About Marshall County](#)

3	Letter of Welcome & Overview
4	Links & Contacts
5	Smart Start Guide
6	Maps of Region
7	Community Data
8-10	Labor & Workforce
11	Existing Industry
12	Retail
13	Summary

Mission Statement

The [City of Lewisburg Department of Economic Development](#) exists to assist local business and industry growth and to recruit new business and industry to Lewisburg to create sustainable wage jobs and expand the tax base

[lewisburgtn.info](#) | [lewisburgtn.dev](#) | [lewisburgtn.net](#) | [lewisburgtn.gov](#)

[www.makeitinmarshall.com](#)



New Business Welcome Packet

Welcome to Lewisburg, TN

Thank you for joining our vibrant business community of [Lewisburg, Tennessee](#). We hope that your new venture here will be a successful one and we consider you a great asset to our community.

To insure that you start off on the right track, please review the information in this packet. The websites inside this packet will be very helpful for finding out relevant information and the maps should give you a good sense of the locations of important agencies.

Feel free to contact the City of Lewisburg, [Marshall County](#) or the [Marshall Co. Chamber of Commerce](#) for any assistance you may need. Our contact information can be found in this packet. We are always here to help and will be glad to share with you the information you and your business needs to grow in Lewisburg.

Lewisburg is a small town on the grow with easy proximity to metropolitan Nashville and Huntsville, AL, shopping and dining in Franklin and Murfreesboro and less than a day's drive to 76% of the major U.S. markets thanks to I-65.

Lewisburg is family-friendly, business-friendly and always striving to improve our city for its businesses and citizens. We hope you will get involved in all that Lewisburg has to offer and all its plans for the future.

Once again, Welcome and Congratulations on deciding to make Lewisburg your new home for your business!



[Greg Lowe](#)

[City of Lewisburg – Director of Economic Development](#)

City Manager

Roy "Bam" Haislip
City Hall
131 East Church St., Lewisburg
(931) 359-1544
bam.haislip@lewisburgtn.gov

City Mayor

Jim Bingham
City Hall
131 East Church St., Lewisburg
(931) 359-1544
Jim.bingham@lewisburgtn.gov

Councilman

Patty Parsons
Ward 1
(931) 703-0906
mane6263@yahoo.com

Councilman

Vickie Michael
Ward 2
(931) 993-9737
vickiem@hughes.net

Councilman

Peggy Harwell
Ward 3
(615) 513-1970
chharwell@bellsouth.net

Councilman

Tommy G. Burns
Ward 4
(615) 330-9208
ecdev@bellsouth.net

Councilman

Joe Bradford
Ward 5
(931) 580-4517
josephrbradford37@gmail.com

[Back to Table of Contents](#)



New Business Welcome Packet

Links & Contacts

Make It In Marshall

www.makeitinmarshall.com

City of Lewisburg

www.lewisburgtn.gov

Lewisburg Economic Dev.

www.lewisburgtn.net

Lewisburg ECD Blog

www.lewisburgtnecd.com

Marshall County

www.marshallcountyttn.com

Link Tree One Link

www.linktr.ee/marcotn

Chamber of Commerce

www.marshallchamber.org

Lewisburg Electric System

www.lewisburgelectricsystem.com

Lewisburg Water & Wastewater

<http://www.lewisburgwater.org>

Lewisburg Gas Department

www.lewisburggas.com

Marshall County Schools

www.mcstn.net

Marshall County Recycling

www.marshallcountyrecycles.com

Marshall County Sheriff

www.mctnsheriff.com

Marshall Co. Library

www.marshallcountylibrary.org

Marshall Co. Art Guild

www.marshallcountyartguild.com

Marshall Co. Community Theatre

www.dixietheatre.org

Ellington Airport

www.ellingtonairport.com

Business License - Sales Tax ID

City of Lewisburg

Christi Hamlett

City Hall

131 East Church St., Lewisburg

(931) 359-1544

Christi.hamlett@lewisburgtn.gov

Marshall County

Daphne Fagan

County Annex

Courthouse Annex, Lewisburg

(931) 359-1072

Daphne.fagan@tn.gov

Zoning, Codes and Permitting

City of Lewisburg

Lueshell Taylor

City Hall

131 East Church St., Lewisburg

(931) 359-1544

Lueshell.taylor@lewisburgtn.gov

Marshall County

Clint Williams

3rd Floor

Courthouse Annex, Lewisburg

(931) 359-8839 or 0567

c.williams@marshallcountyttn.com

Fire and Health Inspections

City of Lewisburg

Jeff Crick

Fire Station

118 Water St., Lewisburg

(931) 982-3076

jeff.crick@lewisburgtn.gov

Marshall County

Angie Faulkner

Health Department

1031 War Eagle Dr., Lewisburg

(931) 359-1551

Angie.faulkner@tn.gov

Beer Permit and Liquor License

City of Lewisburg

Christi Hamlett

City Hall

131 East Church St., Lewisburg

(931) 359-1544

Christi.hamlett@lewisburgtn.gov

Get Liquor License

TN Alcoholic Beverage Commission

(615) 741-1602

<https://www.tn.gov/abc/licensing/liquor-by-the-drink-licenses.html>

Economic Development

City of Lewisburg

Greg Lowe

City Hall

131 East Church St., Lewisburg

(931) 359-1544

greg.lowe@lewisburgtn.gov

Marshall County

Emily Darnell

Mayor's Office

Courthouse Annex, Lewisburg

(931) 359-5536

Emily.darnell@marshallcountyttn.com

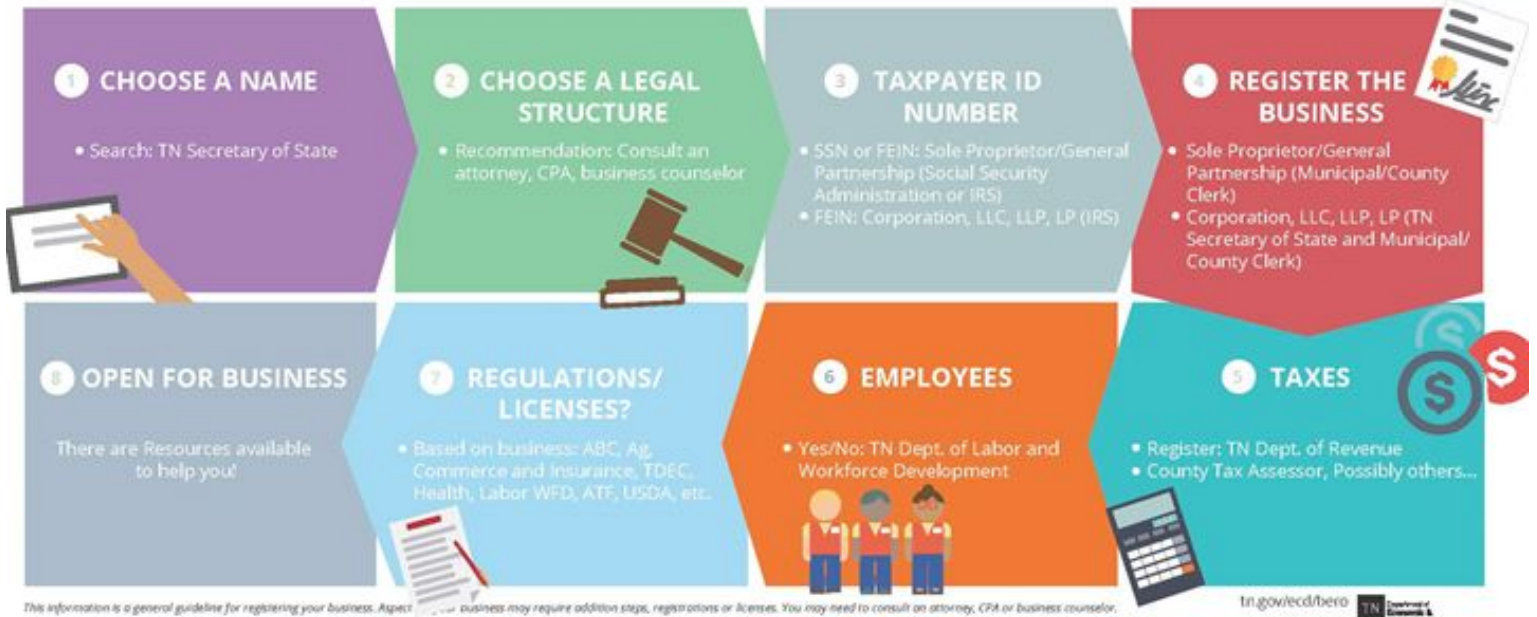
lewisburgtn.info | lewisburgtn.dev

[Back to Table of Contents](#)



New Business Welcome Packet

Smart Start Community



Tennessee **SmartStart**[™]

YouTube Tutorial

[TN New Business Worksheet](#)

<https://www.tnsmartstart.com/>

<https://youtu.be/K8Z1dlfitBI>

[TN Dept. of Revenue Website for New Businesses](#)

makeitinmarshall.com | mainstreetlewisburgtn.org

lewisburgtn.info | lewisburgtn.dev | lewisburgtn.net | lewisburgtn.gov



New Business Welcome Packet

Maps of Region



New Business Welcome Packet

Community Data

Lewisburg, Marshall County, Tennessee

- Latitude: N35° 26.95'
- Longitude: W86° 47.33'
- Elevation: 707'

33,240

Population: County

12,380

Population: City

+2.4%

Annual Population Growth

Gold Level

Sustainable Community (TVA)

Tier II

Enhancement County (TN ECD)

Benchmark II

Three Star Community (TN ECD)

Top 100

Micropolitan

4X (Site Selection Magazine)

Climate:

Annual Average Temperature: 57.7°

Average High Temperature: 70.5°

Average Low Temperature: 45.0°

Annual Average Precipitation: 54.84"

Annual Average Snowfall: 2.2"

Mean Length of Freeze-Free Period (days): 180-220

6th & 14th

Fastest Growing Micropolitan in Nation
(2017) by [UT BERG](#) | (2020) by [SiteSeer](#)

14th

Most Dynamic Micropolitan in Nation
([Walton Foundation 2019](#))

Top 4%

National ISO Rating - Fire

2nd

Most Affordable City in TN
([Homesnacks 2020](#))

13%

Below Cost of Living Index

14th

Quality of Life in TN

20th

Healthiest County in TN

28th

Safest County in TN

Median Household Income	\$52,463
Per Capita Income	\$36,759
Poverty Rate	13.5%
Home Ownership Rate	71.7%
Median Home Value	\$124,917
Average Rental Rate	\$564
Median Industry Earnings	\$64,454

Sources: Zoomprospector, TN ECD, TVA, Local Agencies

→ [\(Link to Recent Demographics Report\)](#)



“Lewisburg’s Park and Recreation system, per capita, meets or exceeds national standards in almost every category.”

Ritchie Jones - Hodgson Douglas

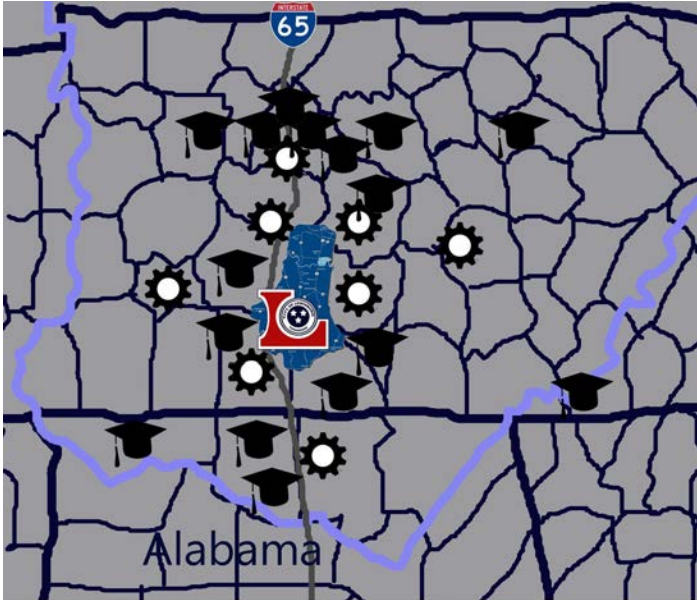
[Back to Table of Contents](#)



New Business Welcome Packet

Labor & Workforce

Talent Overview



 Colleges & Universities  Technical Colleges

28

Postsecondary Institutions

20,000 +/-

Annual Graduates

300 +/-

Programs & Majors

Within 50 Miles



[Spot Lowe Technology Center](#)



[TCAT - Pulaski](#)



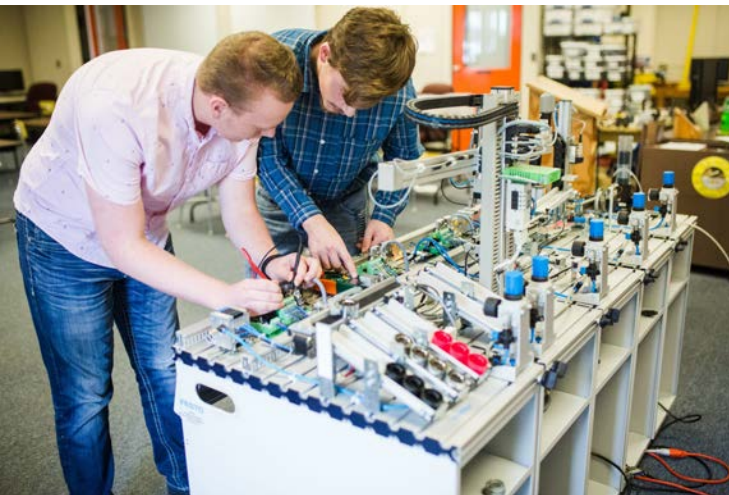
[TCAT - Shelbyville](#)



[Columbia State](#)

Marshall Co. Schools

Elementary Schools	5 - 2,385 Students
Middle Schools	3 - 1,296 Students
High Schools	3 - 1,545 Students
Public Cost Per Student	\$9,399.83
Student/Teacher Ratio	17:1
Graduation Rate	93%
Avg. ACT Score	20.3
College-Going Rate	65%
Certification/Associate's	27%
Bachelor's Degree or Higher	14%



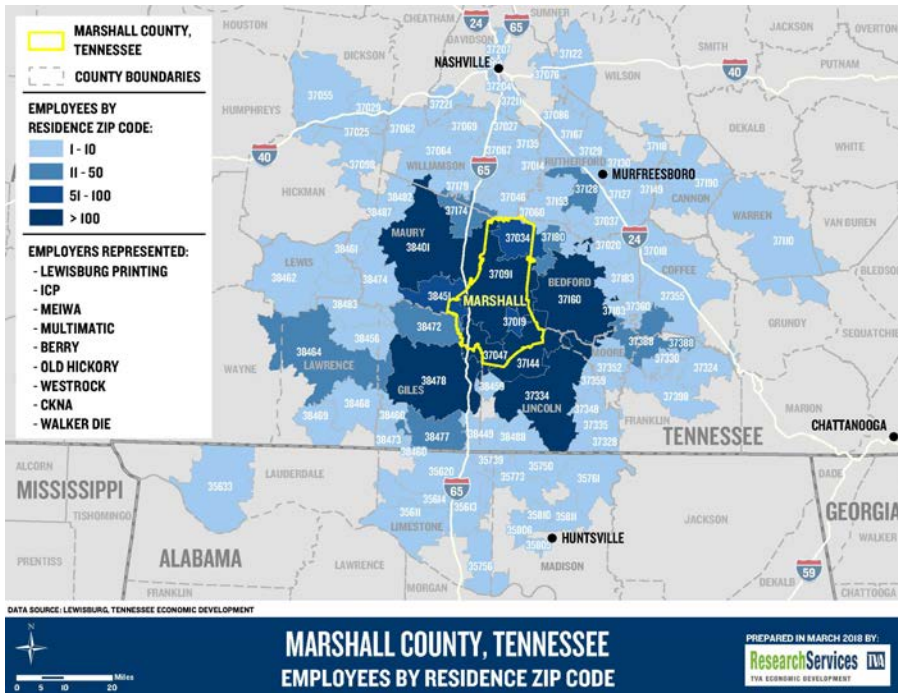
lewisburgtn.info | lewisburgtn.dev | lewisburgtn.net | lewisburgtn.gov

[Back to Table of Contents](#)



New Business Welcome Packet

Labor & Workforce



Manufacturing Employees Full-Time

Manufacturing Temp Workers

3863 **278**

Avg Starting Wage

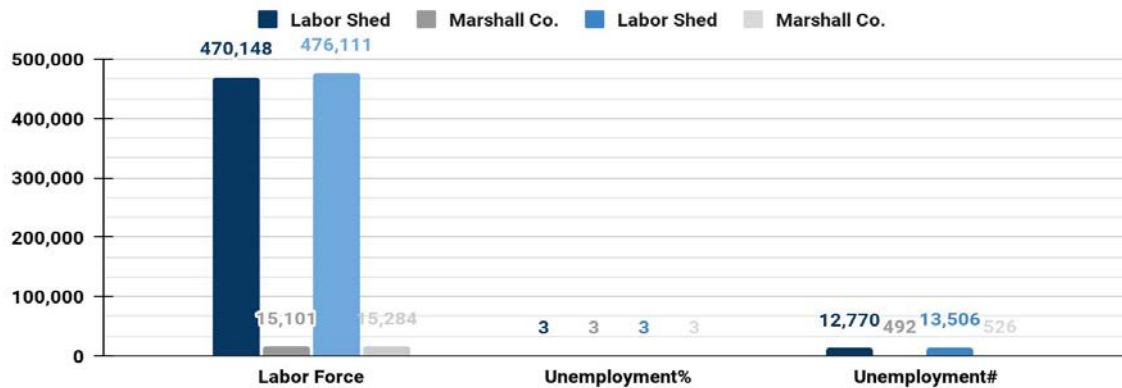
Avg. Wage

\$14.27 **\$18**

[Wage & Benefits Survey 2021 - South Middle TN Infographic](#)

[Wages and Benefits Survey 2021 - Marshall Co. Region Infographic](#)

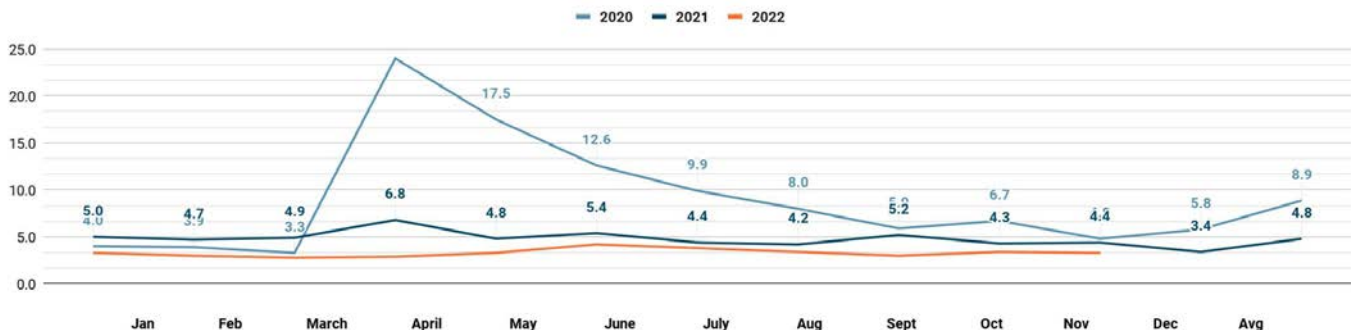
Labor Report November 2022 vs October 2022



* Labor Market: Bedford, Giles, Lawrence, Lincoln, Marshall, Maury, Moore, Rutherford & Williamson Source: November 2022 TN Dept. of Labor

Unemployment Rate Percentages

2020 vs 2021 vs 2022



lewisburgtn.info | lewisburgtn.dev | lewisburgtn.net | lewisburgtn.gov

[Back to Table of Contents](#)



New Business Welcome Packet

Labor & Workforce



Automotive Suppliers

[Link to Data](#)



Metalworking Tool & Die

[Link to Data](#)



Plastics & Chemicals

[Link to Data](#)



Food & Beverage

[Link to Data](#)

Our Companies		
696% More Vehicle Steering & Suspension Components Manufacturing <i>Than the US National Average</i>	536% More Automobile Manufacturers <i>Than the US National Average</i>	317% More Motor Vehicle Brake System Manufacturing <i>Than the US National Average</i>
Our Workforce		
11,021 Assemblers & Fabricators	5,121 Engineers	4,004 Auto Service Technicians & Mechanics

Our Companies		
712% More Secondary Smelting and Alloying of Aluminum <i>Than the US National Average</i>	460% More Nonferrous Metal Die-Casting Foundries <i>Than the US National Average</i>	155% More Rolled Steel Shape Manufacturing <i>Than the US National Average</i>
Our Workforce		
11,021 Assemblers & Fabricators Misc, Including Team Assembly	1,562 Industrial Machinery Mechanics	993 Machinists

Our Companies		
293% More Synthetic Dye & Pigment Mfg. <i>Than the US National Average</i>	174% More Plastic Packaging Film & Sheet Mfg. <i>Than the US National Average</i>	119% More Custom Compounding of Purchased Resins <i>Than the US National Average</i>
Our Workforce		
5,334 Engineers	1,562 Industrial Machinery Mechanics	846 Multiple Machine Tool Operators (Metal/Plastic)

Our Companies		
985% More Distilleries <i>Than the US National Average</i>	459% More Misc. Snack Food Manufacturing <i>Than the US National Average</i>	99% More Poultry Processing <i>Than the US National Average</i>
Our Workforce		
4,717 Food Preparation Workers	2,647 Cooks, Institution and Cafeteria	2,167 Food Service Managers



New Business Welcome Packet

Existing Industry

50

Manufacturers Manufacturing Employees

4,000+

Associations

Manufacturers' Association

Advanced Manufacturing Council

Industrial Development Board

Types

Automotive

Aerospace & Defense

Metalworking/Tool & Die

Machining

Plastics & Chemicals

Food & Beverage

Electronics

Commercial Printing

Tank Refurbishing

Warehouse/Distribution

Foreign-Owned



Top 10 Employers



	Product	Employees	Established	Expanded
	Automotive Dashboards	900	1984	2011-2019
	Aluminum Die Casting	400	1959	2007-2019
	Automotive Interior & Exterior	330	2018	2021-2023
	Conveyor Systems	250	2002	2014-2020
	HVAC Distribution	230	1971	1975-1990
	Defense Electronics	200	1966	2012-2017
	Corrugated Products	200	1975	2014-2018
	Meats and Condiments	180	2014	2014-2019-2020
	Commercial Printing	155	1898	2006-2008-2010-2012-2018-2021
	Automotive Suspensions	150	2017	

Support

Tool & Die

Heavy Hardware

Lubricants

Abrasives

Foundry

Sheet Metal

Welding Supply

Coatings

Paints/Enamels

Shrink Wrap

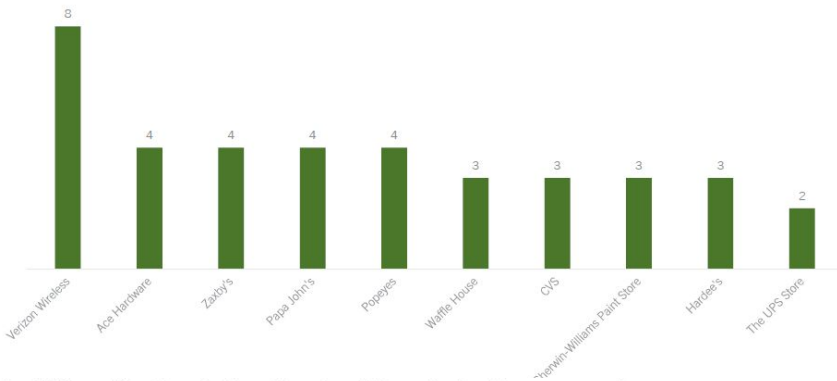


New Business Welcome Packet

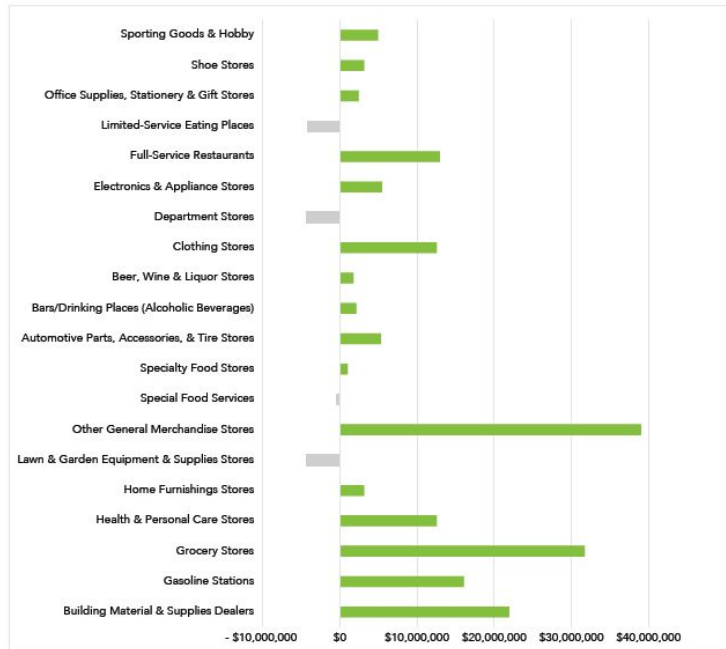
Retail

Retail Prospects – Lewisburg, TN

These retailers are realistic opportunities you can immediately target. Knowing your trade area, type of consumer, and the retail needs of the community is critically important - but even the best data cannot support expansion without the correct piece of real estate.

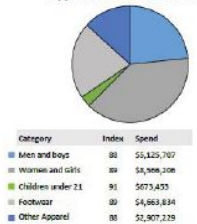


CONSUMER DEMAND AND SUPPLY (OPPORTUNITY GAP)

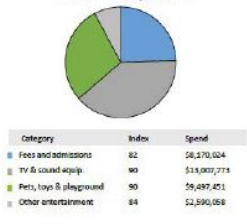


By utilizing mobile data collection, data and analytics, and real estate acumen, our team identified shopping patterns within your Custom Trade Area that will answer key questions for your revitalization efforts. Based on the CTA, we analyzed consumer expenditures annually in 5 retail categories: Apparel & Services, Entertainment, Food & Beverages, Household Equipment, and Others.

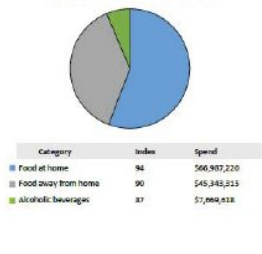
Apparel and Services: \$21.9 MM



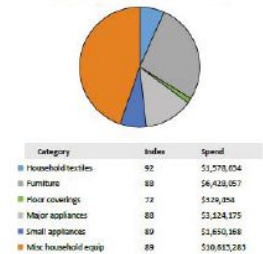
Entertainment: \$33.3 MM



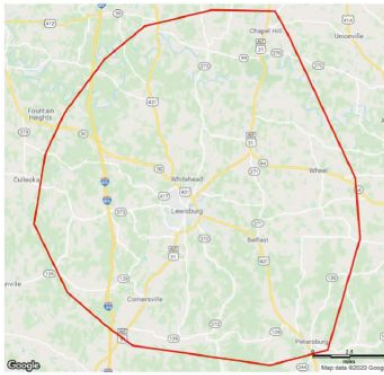
Food and Beverages: \$120.0 MM



Household Equipment: \$23.7 MM

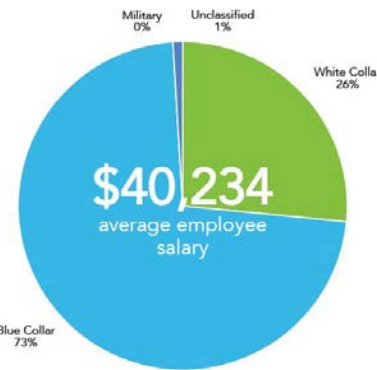
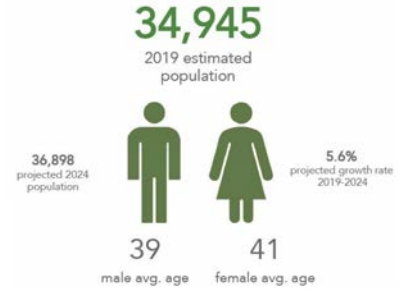


Other Categories: \$30.5 MM



Lewisburg, TN (CTA) Population – 34,945

*The following demographics reflect the Custom Trade Area (CTA) and not geographic community boundaries.

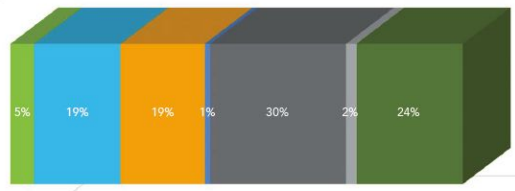


*Index numbers represent your spending patterns in comparison to the standard community in the U.S. The base/standard index is always 100. Your index is either below, on or higher than the standard spending patterns per each category.



DAYTIME POPULATION

- Children at home
- Retired/Disable persons
- Homemakers
- Work at Home
- Employed
- Unemployed
- Student Populations



[Back to Table of Contents](#)



New Business Welcome Packet

Welcome Home

Location & Logistics

Labor & Workforce

Education & Training

Quality of Life/Place

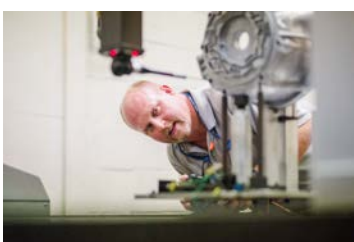
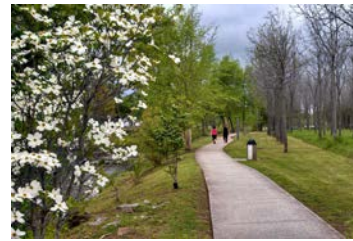
Leadership & Growth

Business & Industry Support

Lewisburg is situated to help you succeed. We have all the tools and amenities you need to thrive at home or in the office, the classroom, the boardroom, the production floor and even the ground floor. Let us prove to you that your decision to come here will be the right one.

“This community has totally proven that our decision was the right one.”

Matt Jung - President, Comfort Research



www.linktr.ee/marcotn

(931) 359-1544

131 East Church St.
Lewisburg, TN 37091

@marshallhappenings

@lewisburgtn



makeitinmarshall.com | mainstreetlewisburgtn.org

lewisburgtn.info | lewisburgtn.dev | lewisburgtn.net | lewisburgtn.gov

