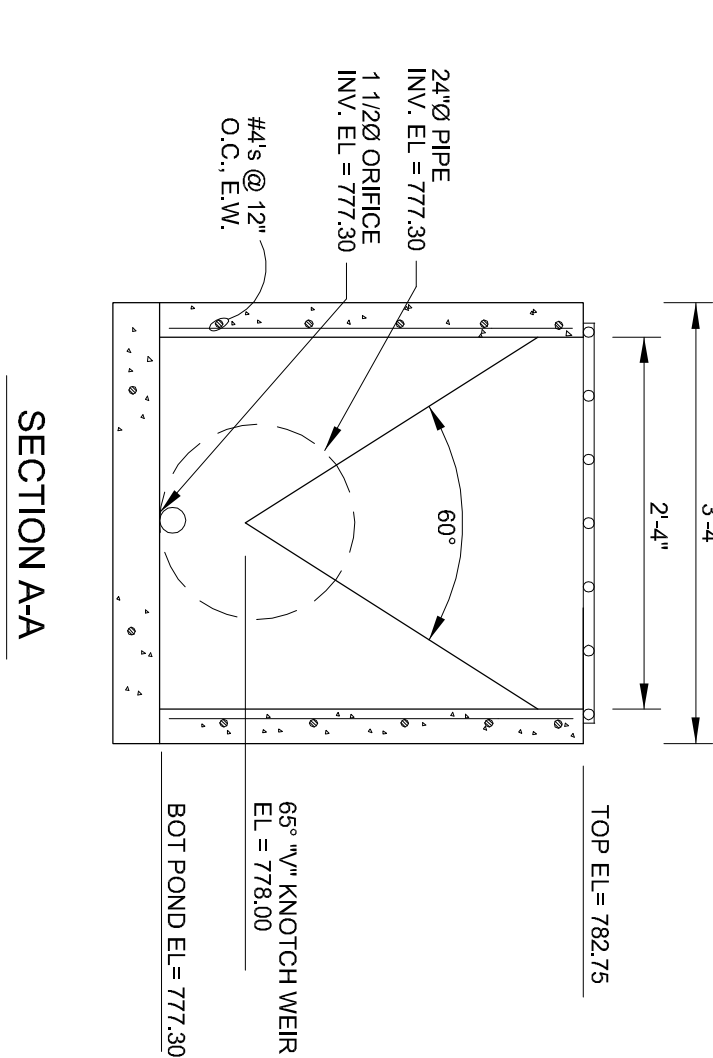
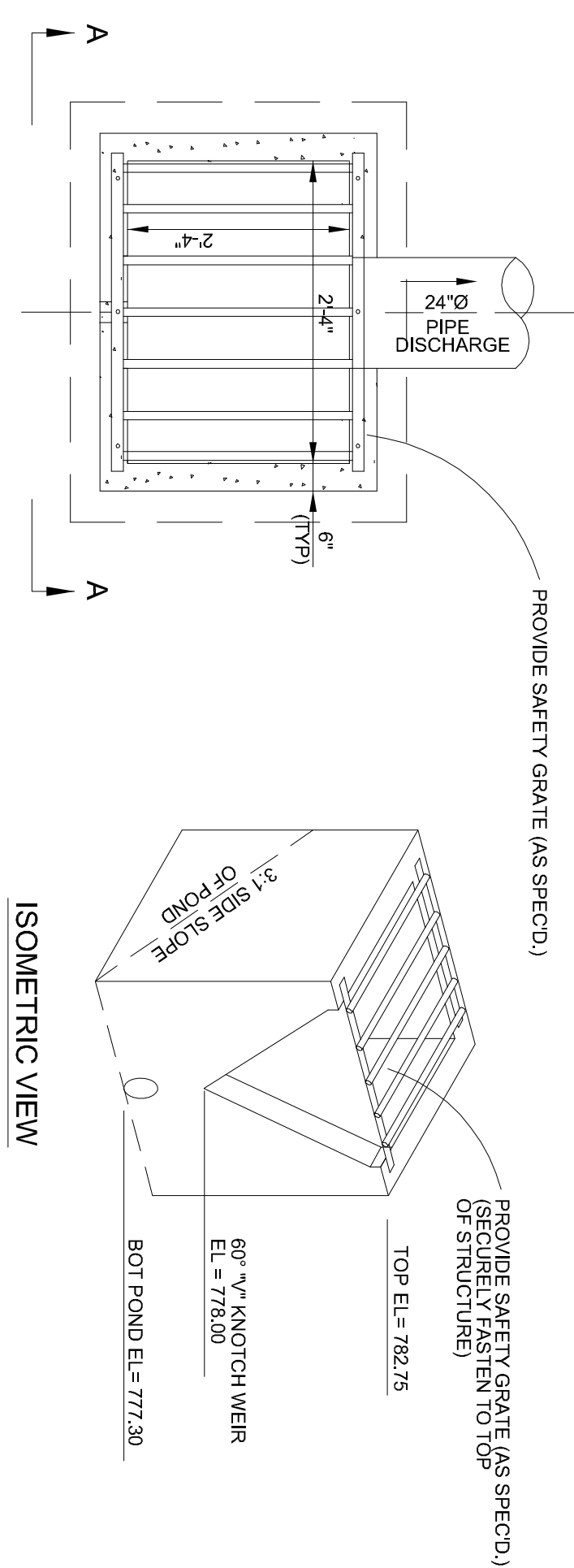
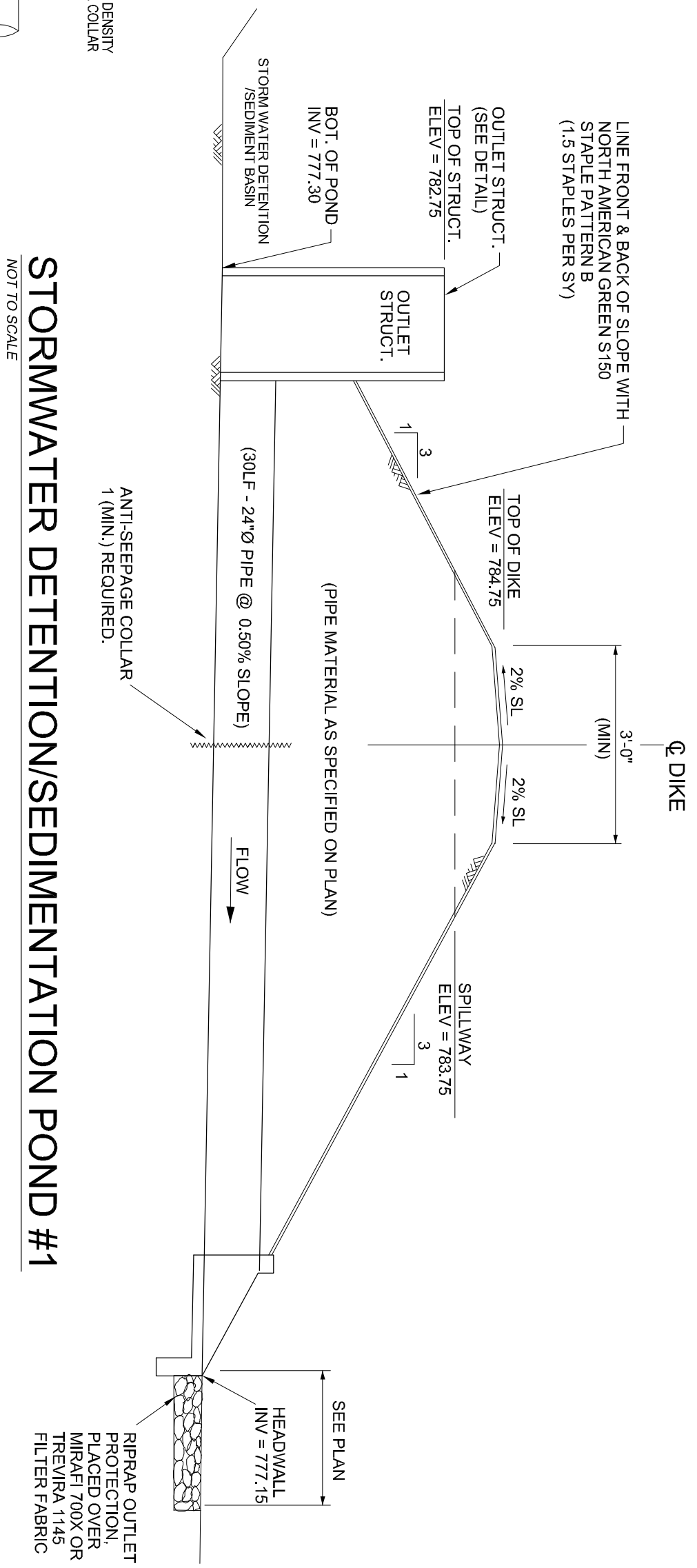


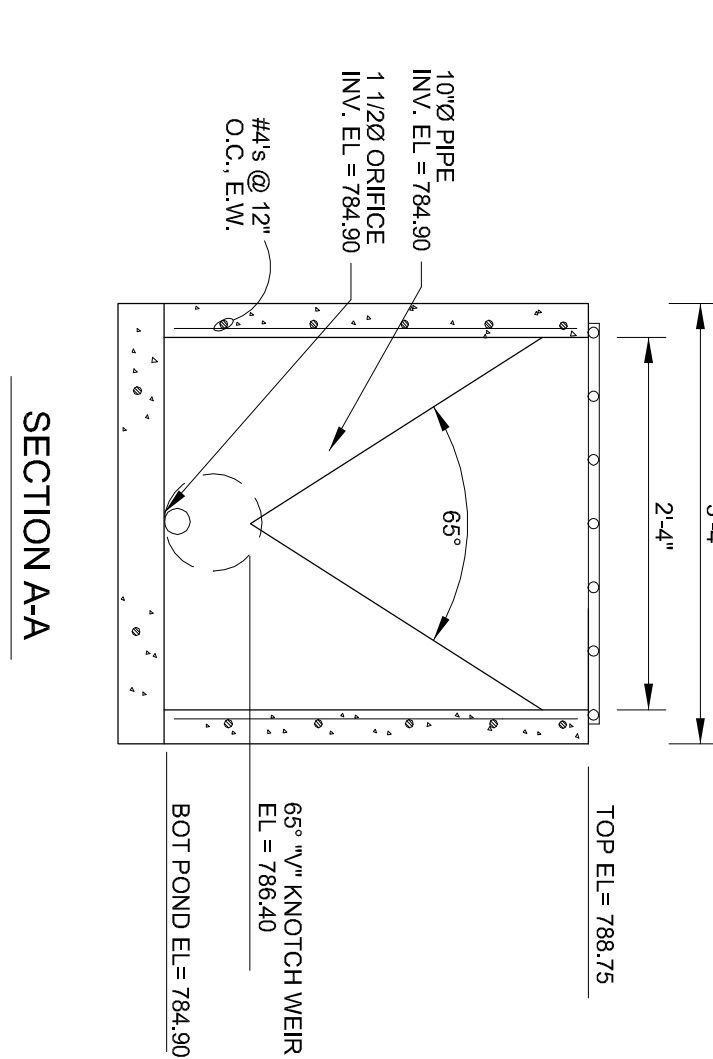
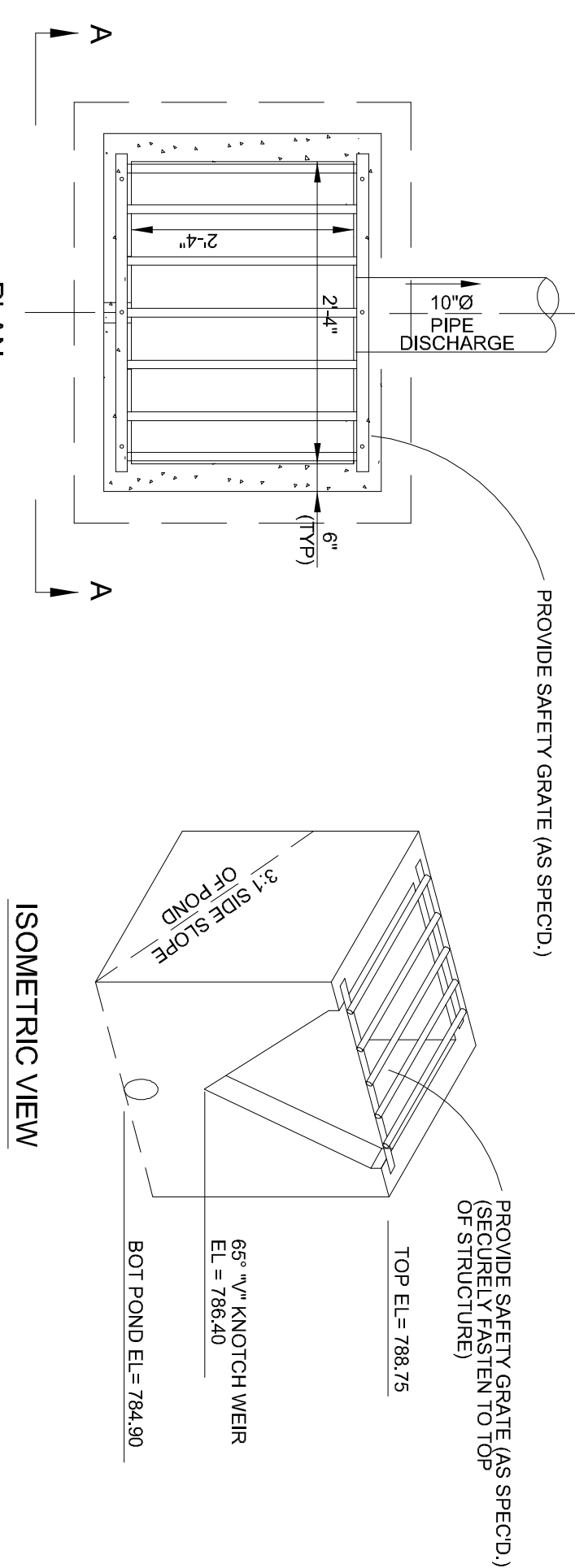
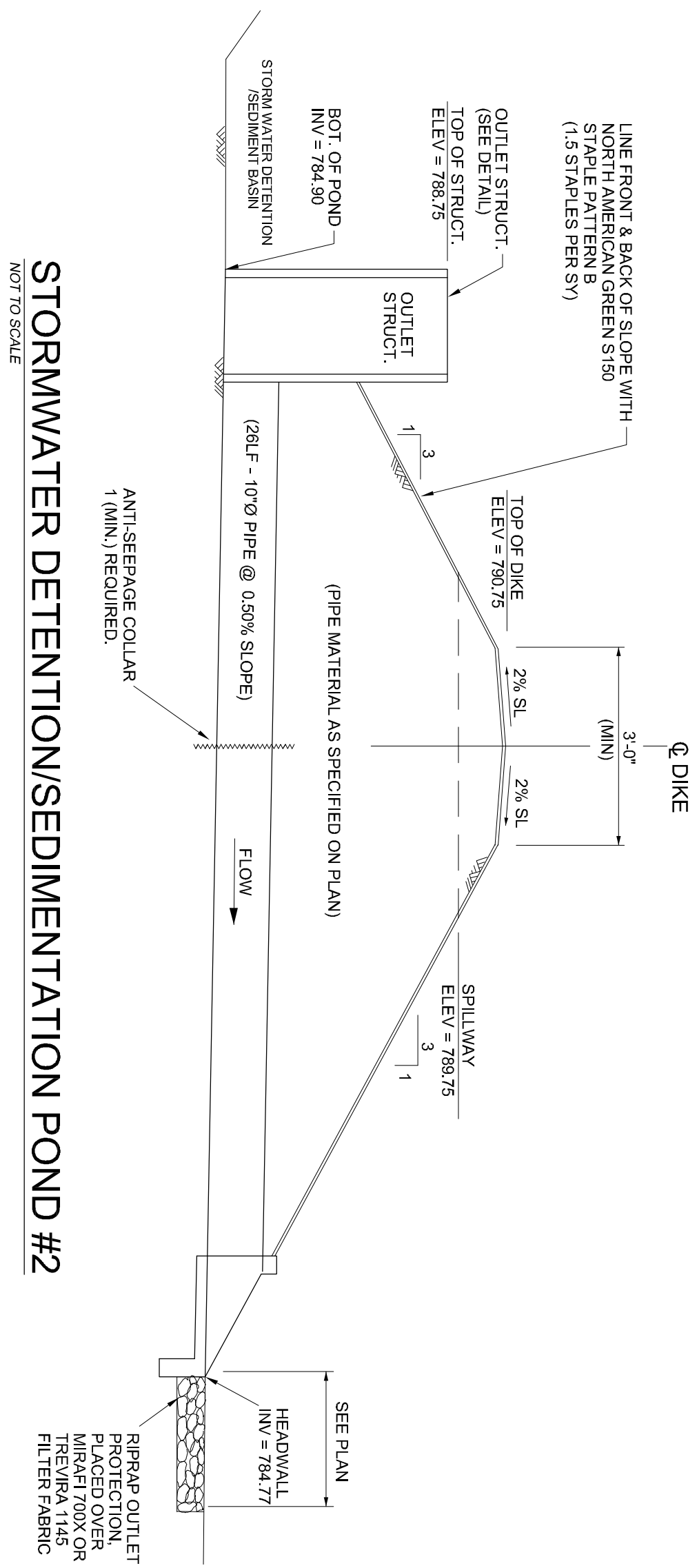
GRATE CASTING
NOT TO SCALE

TRAFFIC OUTLET
FRAME & GRATE (MS-20 LOADING)
JOHN BOUGHARD #4310 (OR EQUAL)

GRATE 155 lbs
FRAME 265 lbs
TOTAL 420 lbs
OPEN AREA 3.06



STORMWATER OUTLET STRUCTURE (POND #1)
NOT TO SCALE



STORMWATER OUTLET STRUCTURE (POND #2)
NOT TO SCALE

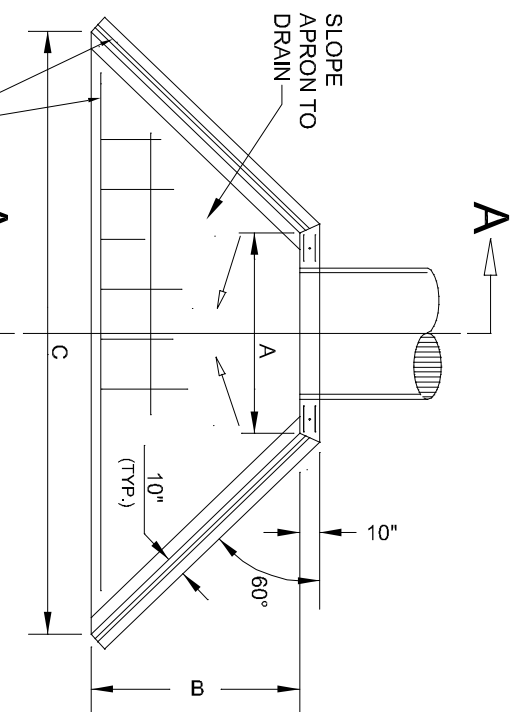
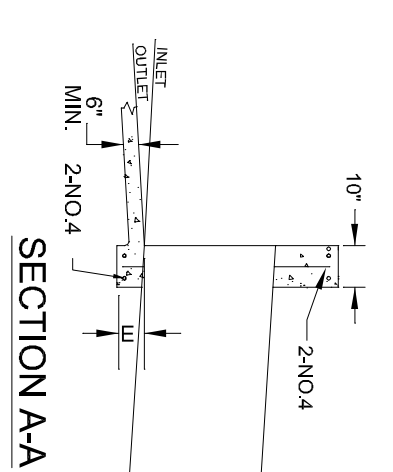
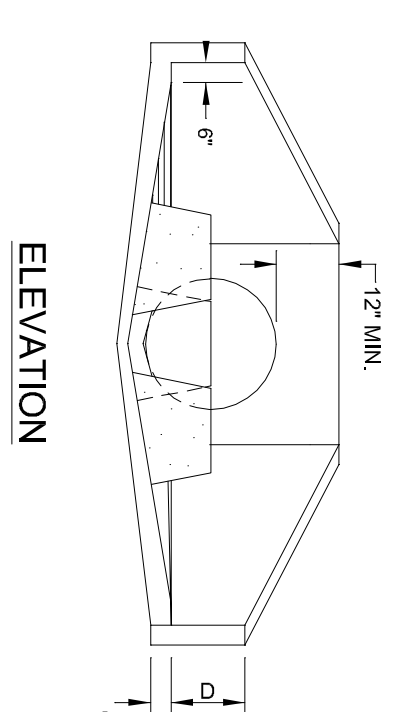
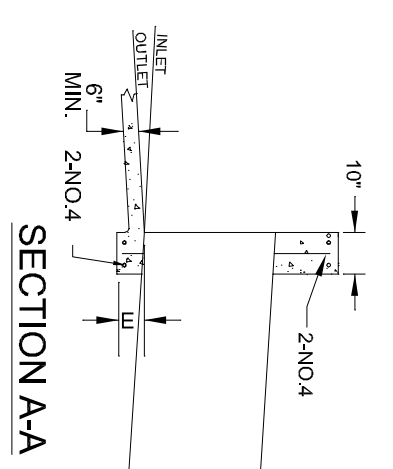
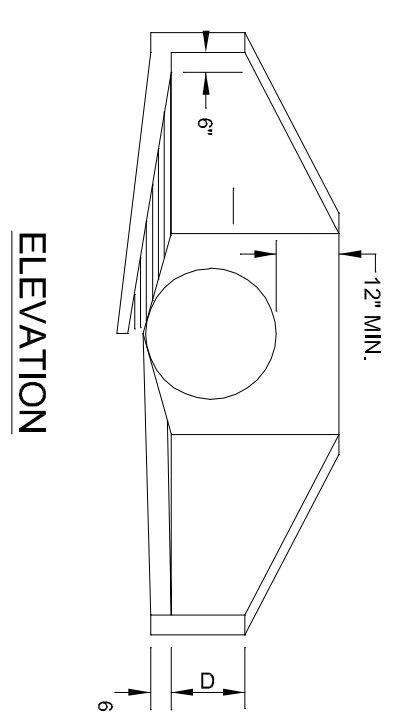


TABLE OF DIMENSIONS

DL	A	B	C	D	E
12	20	30	60	6	8
15	23	36	72	6	8
18	28	42	84	9	8
24	34	48	96	9	8
30	40	54	108	12	10
36	48	60	120	15	10
42	54	66	132	18	10
48	60	72	144	21	12
54	66	78	156	24	12
60	72	84	168	24	12

ALL EDGES OF EXPOSED CONCRETE TO BE FINISHED TO ONE INCH.

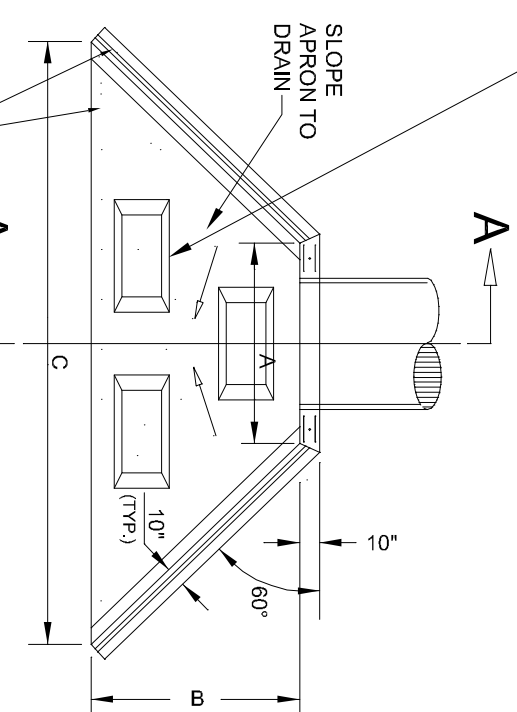


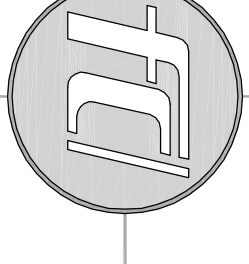
TABLE OF DIMENSIONS

DL	A	B	C	D	E
12	20	30	60	6	8
15	23	36	72	6	8
18	28	42	84	9	8
24	34	48	96	9	8
30	40	54	108	12	10
36	48	60	120	15	10
42	54	66	132	18	10
48	60	72	144	21	12
54	66	78	156	24	12
60	72	84	168	24	12

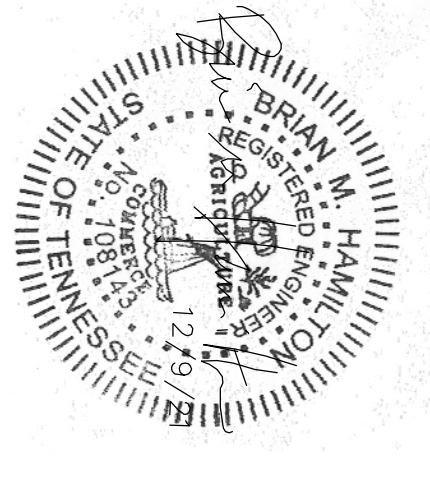
ALL EDGES OF EXPOSED CONCRETE TO BE FINISHED TO ONE INCH.

PRECAST HEADWALL
NOT TO SCALE

PRECAST ENERGY DISSIPATING HEADWALL
NOT TO SCALE



Ferlisi
Civil Design
Consulting & Design Services
P.O. Box 1207
Lewisburg, TN 37047
and other locations



Client/Project:

Josh King Excavation
3484 Osella Road
Cornersville, TN 37047

King's Landing
Townhome Development
1207 Veil Road
3rd Civil District
Lewisburg, Marshall County, TN

Revisions:

Item: Date:

Project No.:

Designed By: DPF

Drawn By: DPF

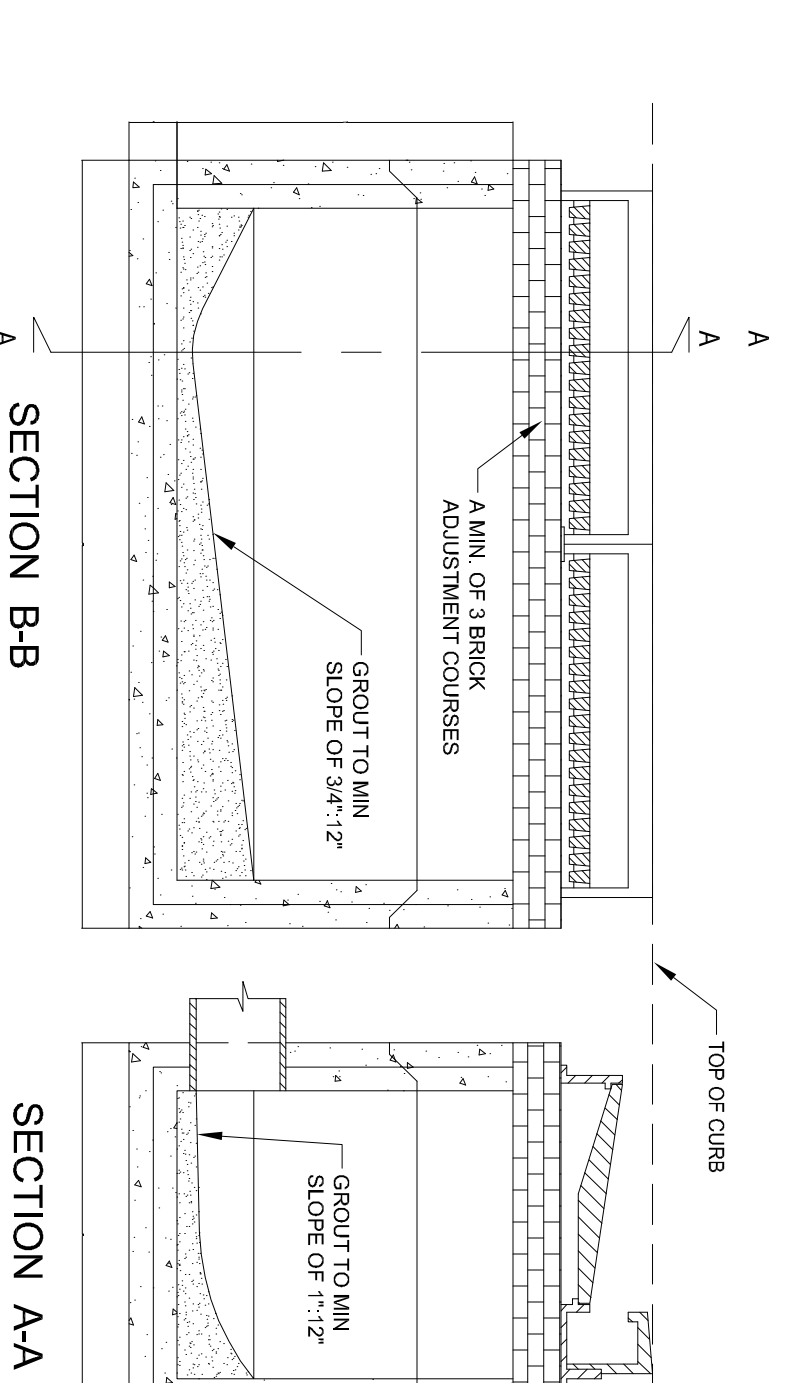
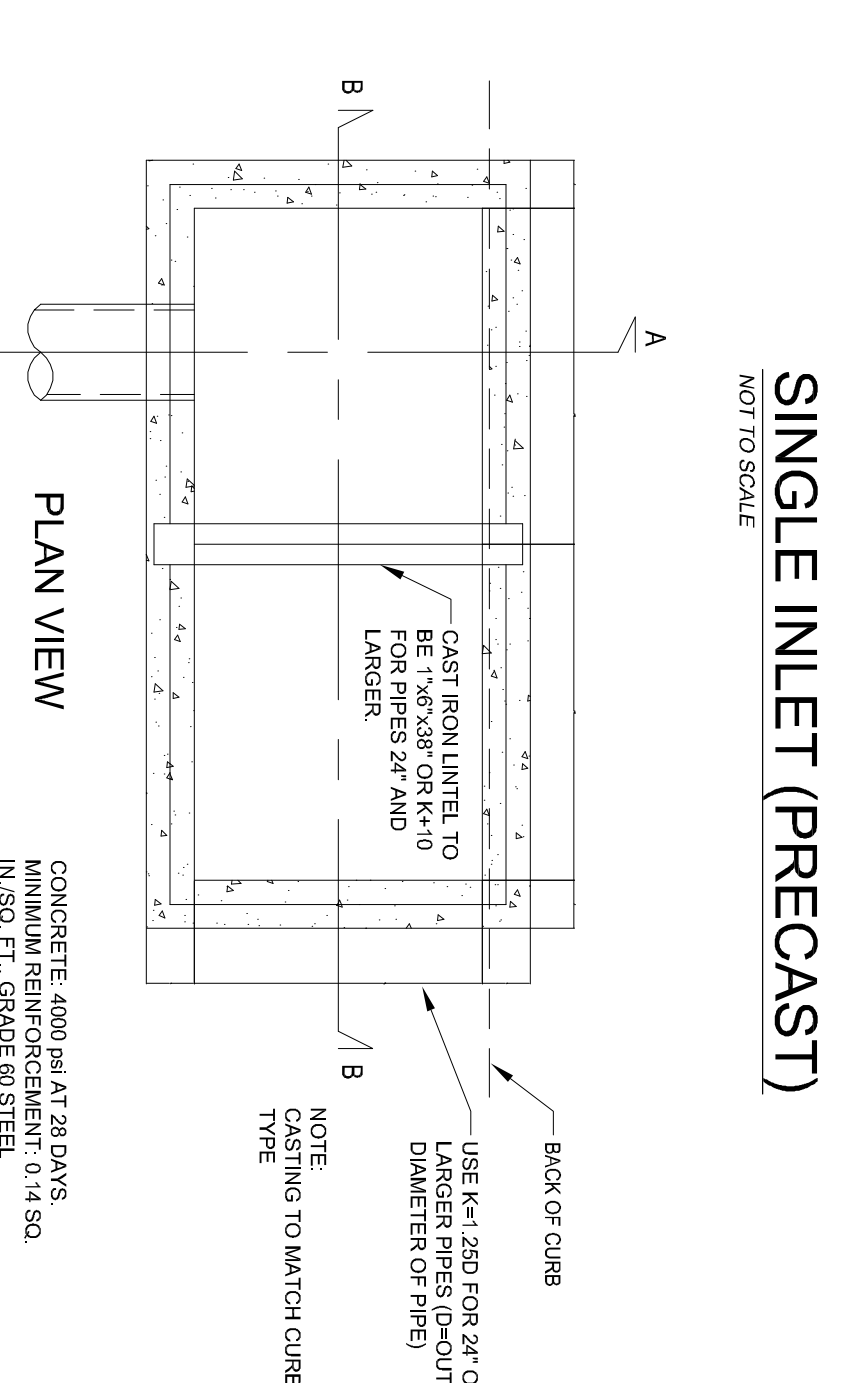
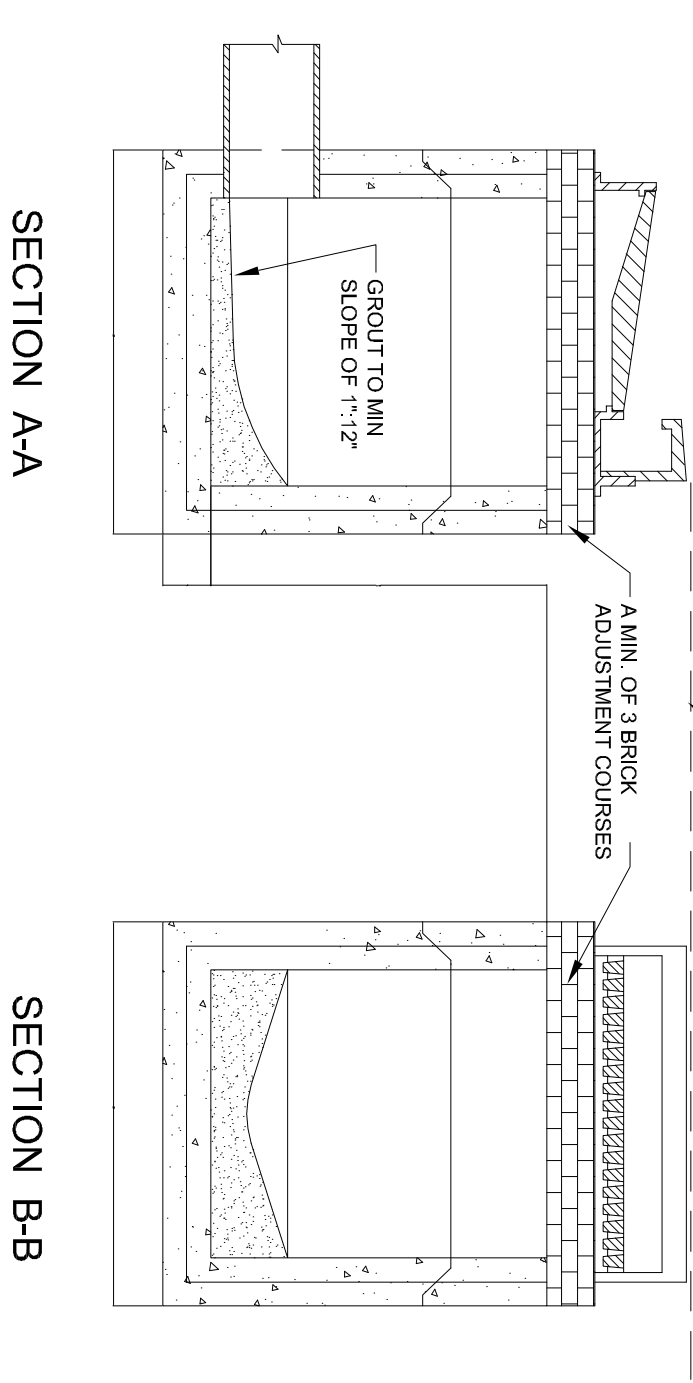
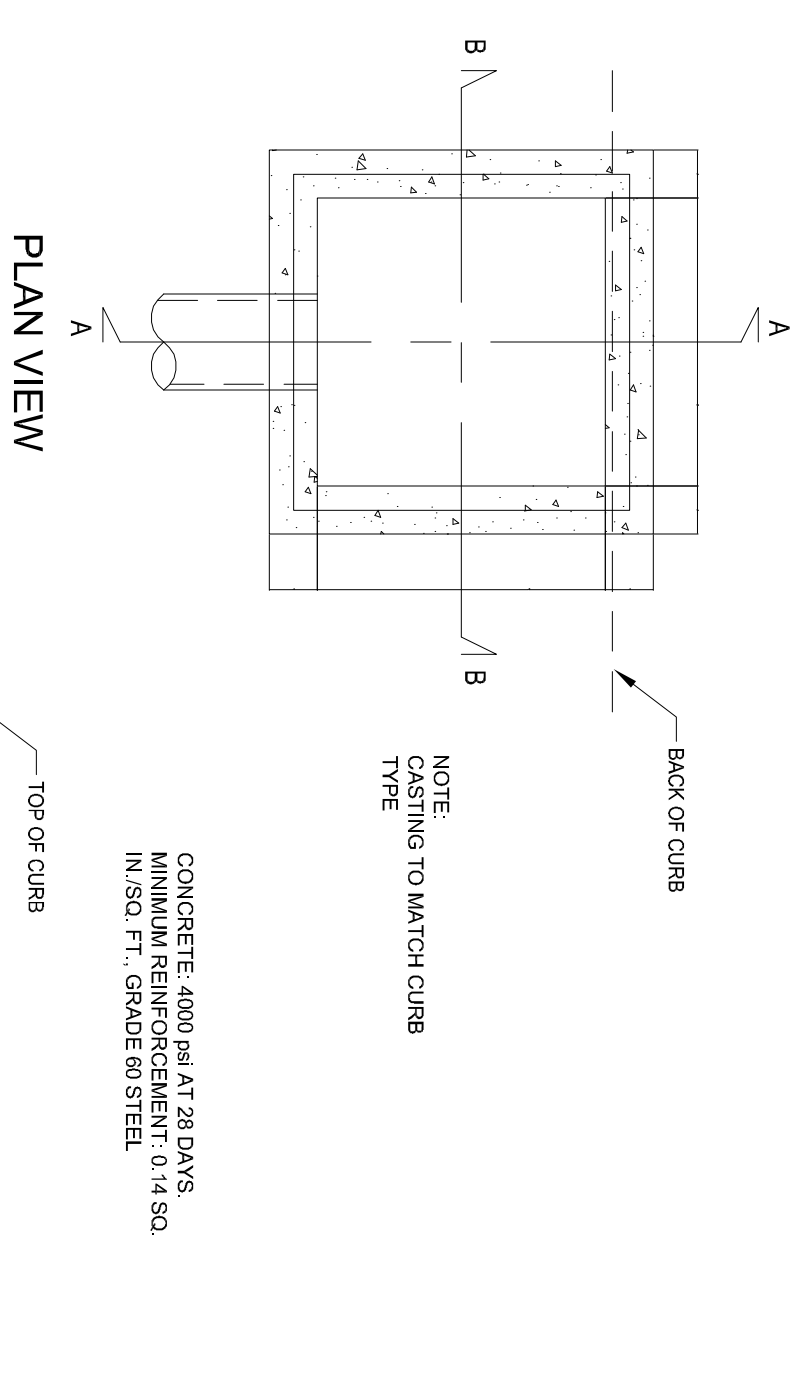
Checked By: DPF

Date: 12/9/21

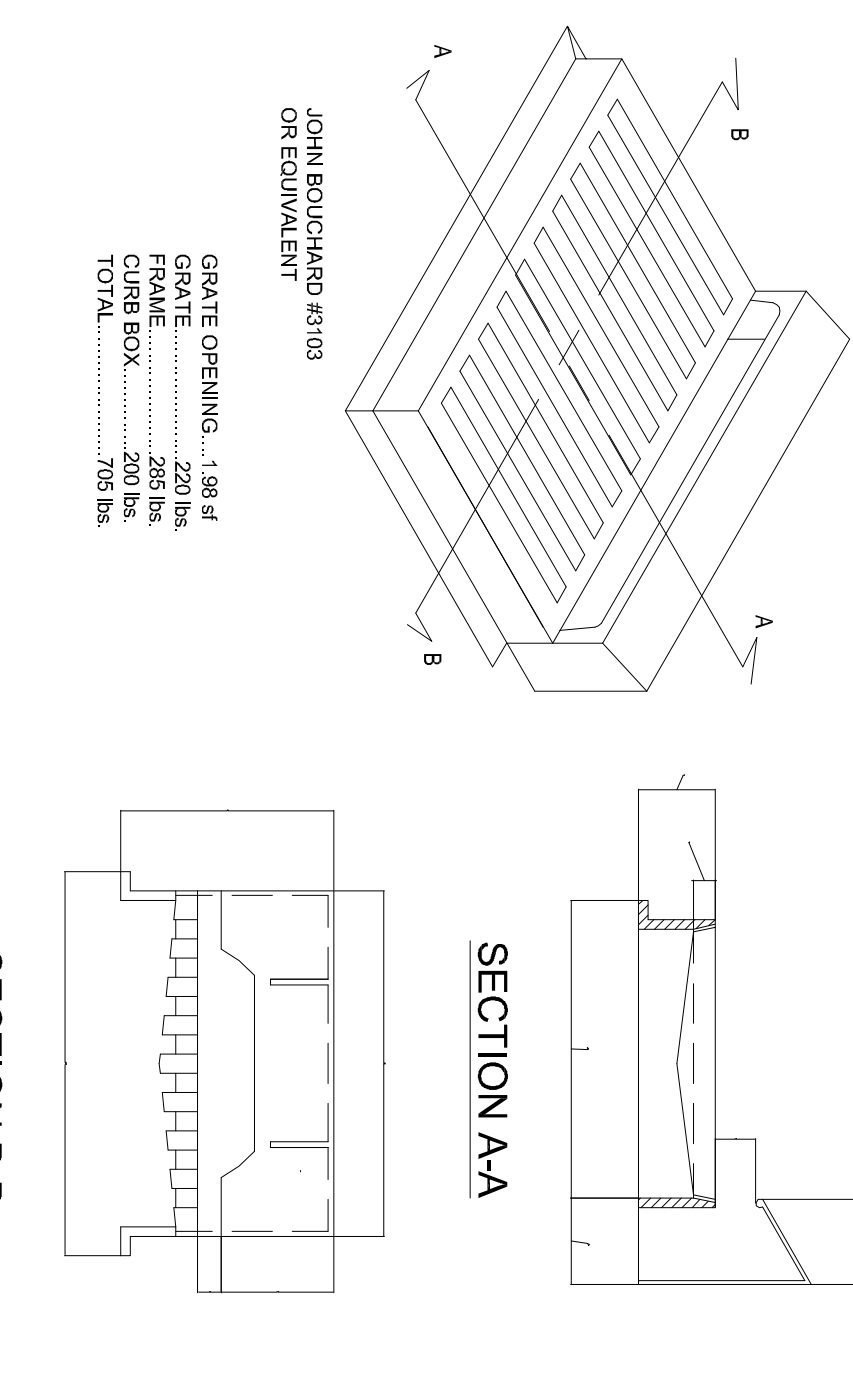
Title: MISCELLANEOUS DETAILS

Drawing No.

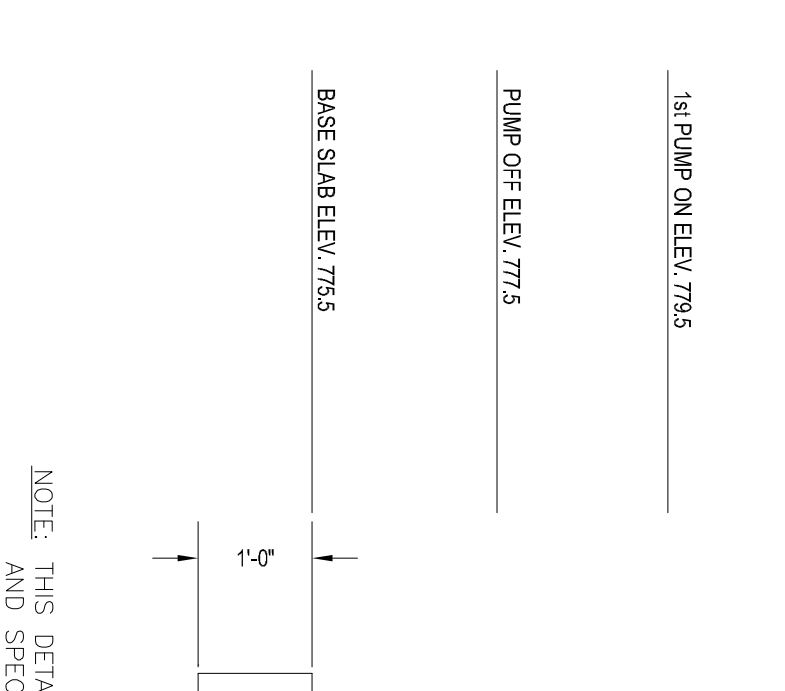
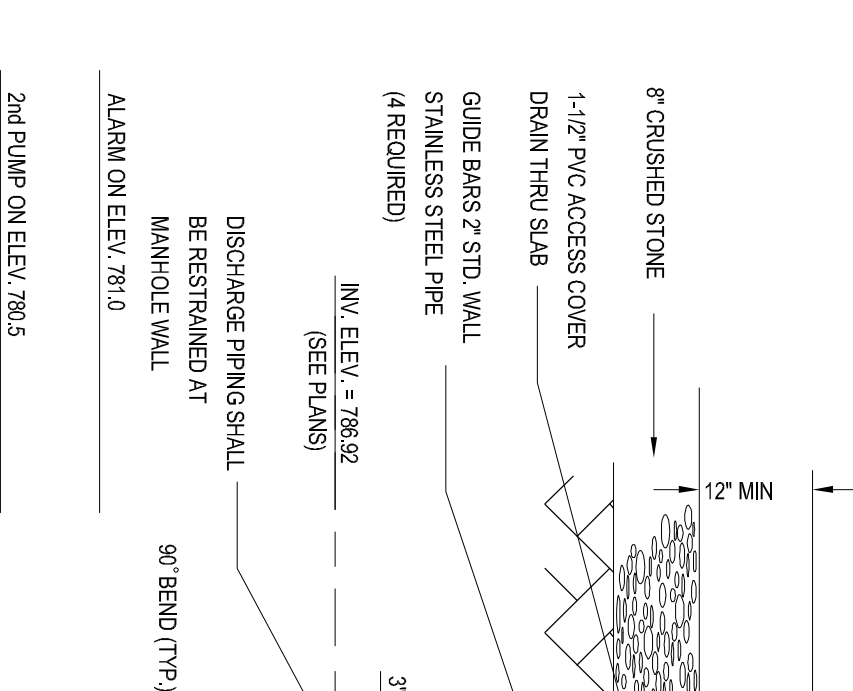
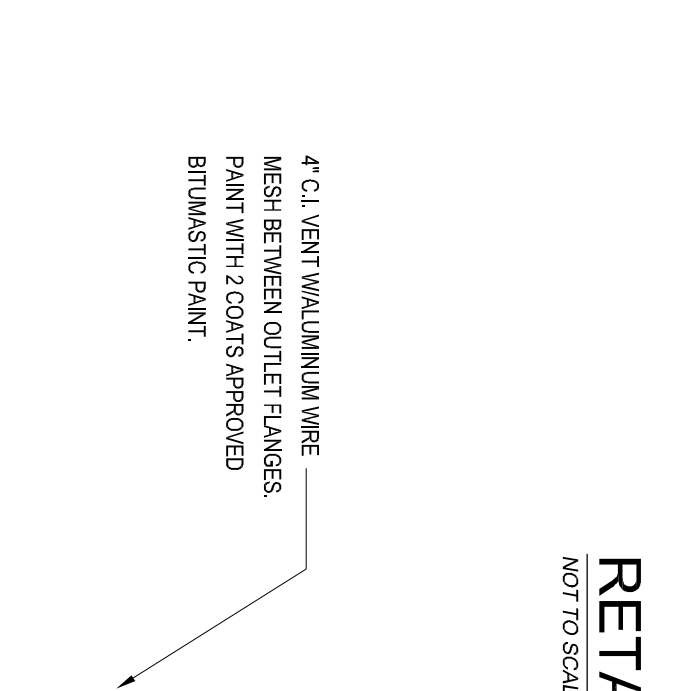
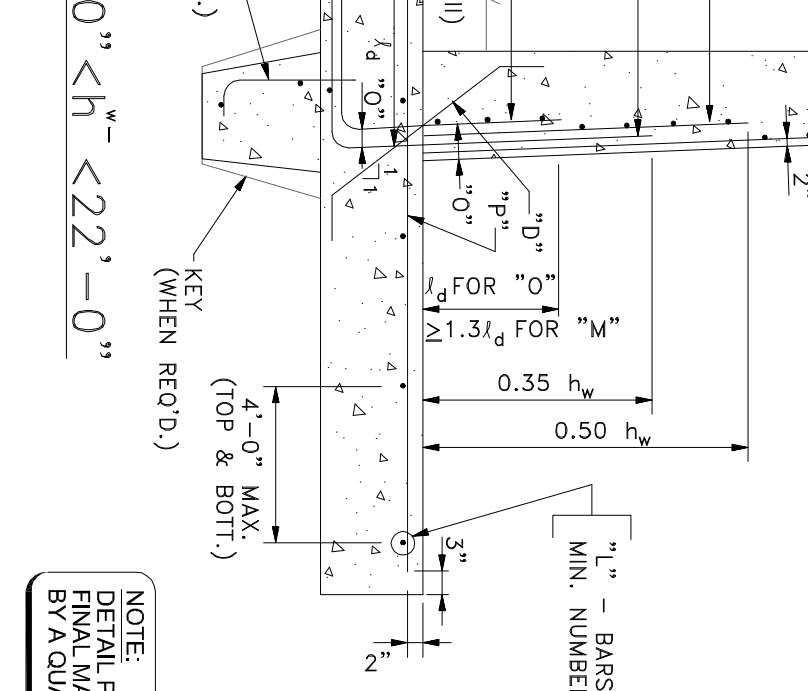
C3.3



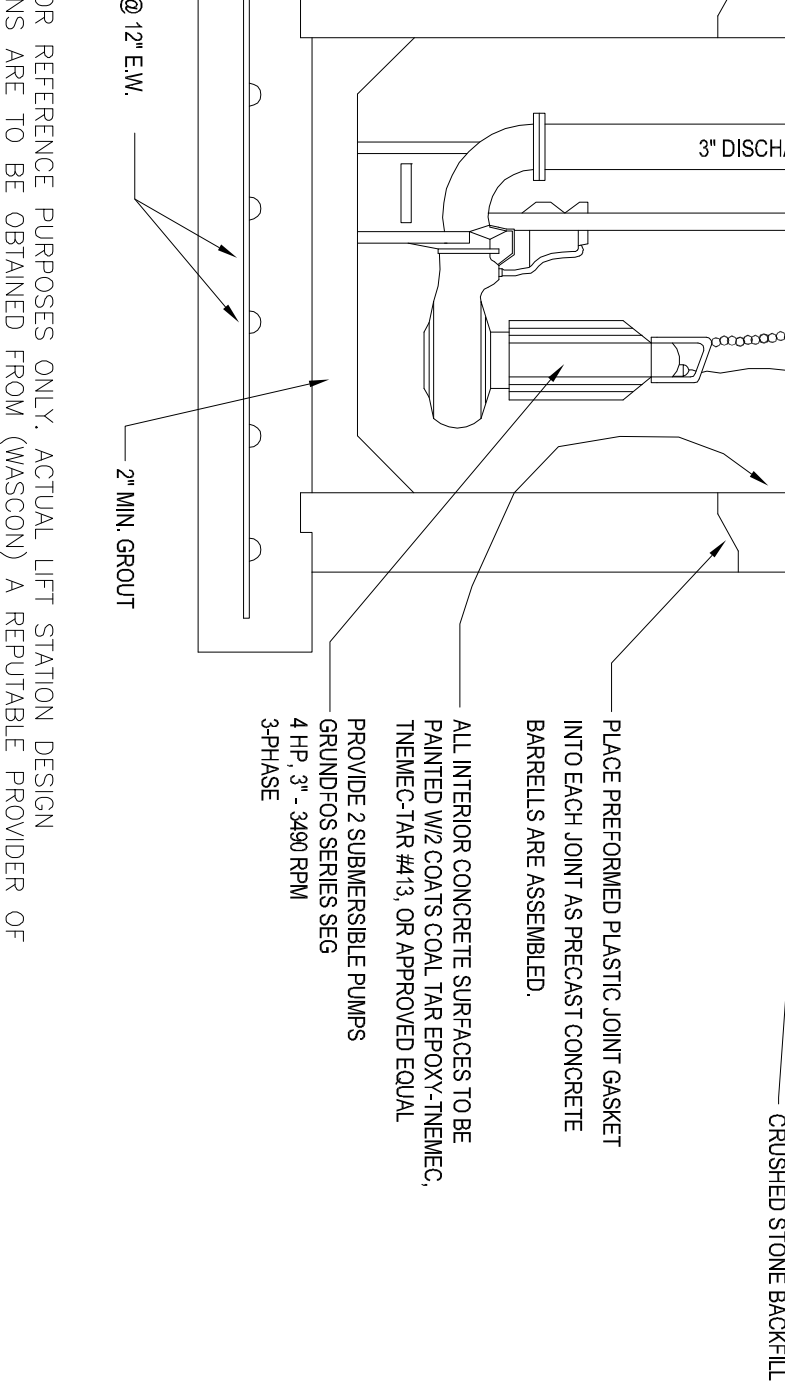
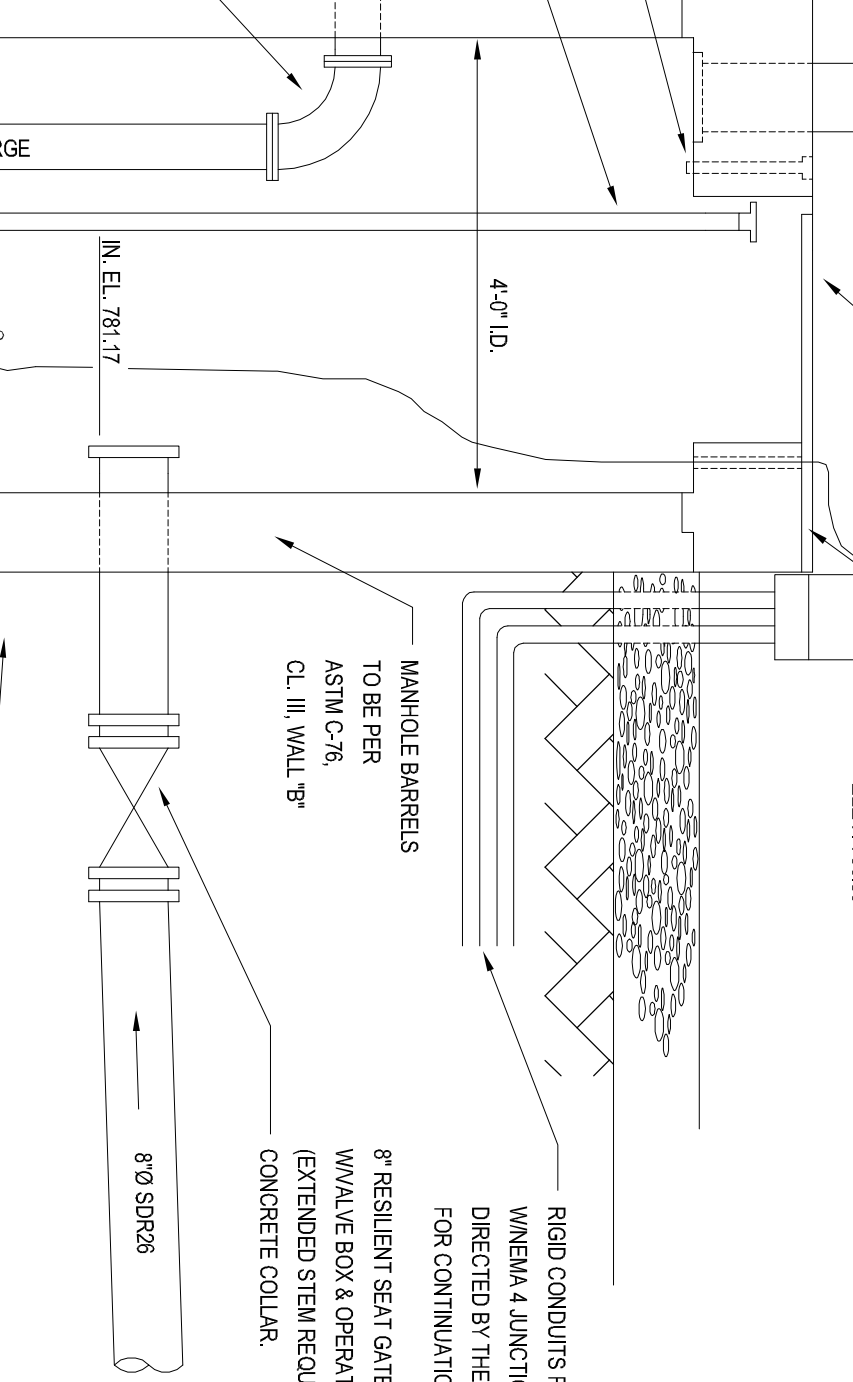
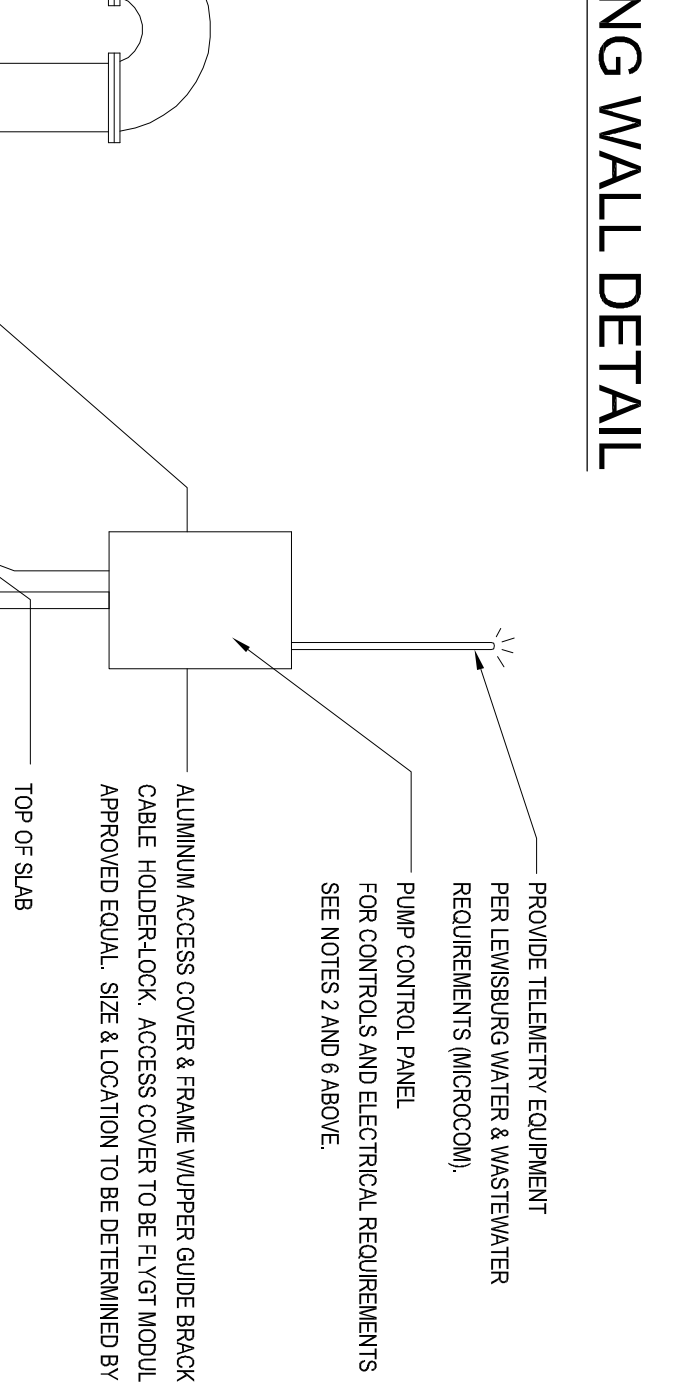
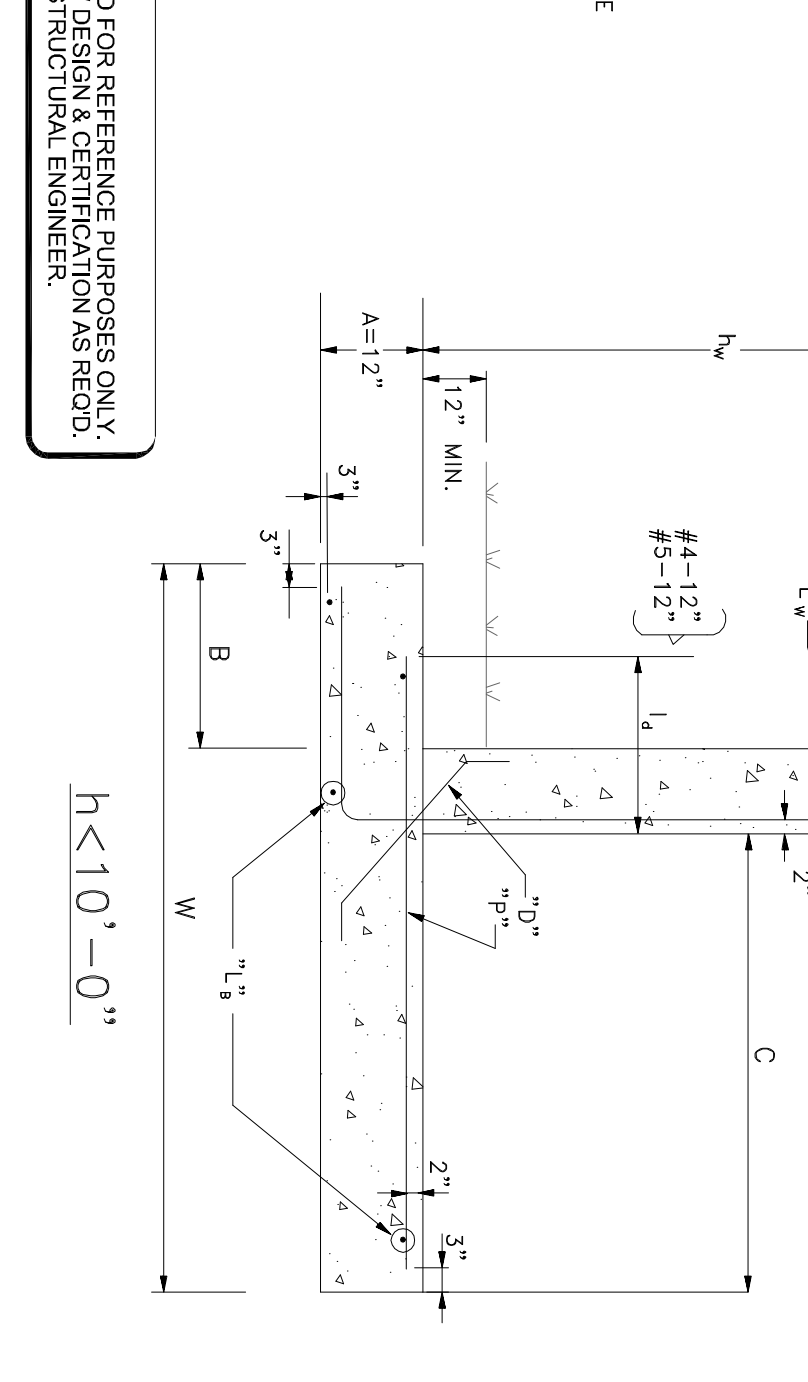
DOUBLE INLET (PRECAST)
NOT TO SCALE



STD. COMBINATION CURB INLET CASTING
NOT TO SCALE



RETAINING WALL DETAIL
NOT TO SCALE



SANITARY LIFT STATION
NOT TO SCALE

MAXIMUM SPACINGS

MINIMUM RATIO

VERT. BARS ≥ 18 IN. MAX. SPACING

HORIZ. BARS ≥ 18 IN. MAX. SPACING

VERT. BARS ≥ 0.00124h_w OR 12" WHATEVER IS SMALLER

HORIZ. BARS ≥ 0.00025h_w OR 4/5 h_w RECD. OR 18" WHATEVER IS SMALLER

HORIZ. BARS ≥ 0.00025h_w OR 4/5 h_w RECD. OR 18" WHATEVER IS SMALLER

KEY

h _w	A _v	C	W	h _k	A _r	O	D	K	L _g	P	M	L
0-5'	8"	2'-6"	4'-6"	12"x6"	12"	#4@18	#4@18	5'-#4	#4@18	-	#4@12	
5-10'	12"	4'-9"	8'-6"	12"x12"	12"	#4@18	#4@18	7'-#5	#5@11	-	#5@12	
10-15'	18"	9'-9"	15'-0"	12"x18"	18"	#5@18	#5@18	8'-#6	#6@9	#6@9	#6@9	#6@12

King's Landing
Townhome Development
1207 Veil Road
3rd Civil District
Lewisburg, Marshall County, TN

Client/Project:
Josh King Excavation
3484 Osella Road
Cornersville, TN 37047

Permit/Seal:
BRAND M. HAMMILL
REGISTERED PROFESSIONAL ENGINEER
STATE OF TENNESSEE
No. 12919
EXPIRES 12/31/2024

Revisions:
Item: _____ Date: _____

Ferlisi
Civil Design
Consulting & Design Services
FERLISI CIVIL DESIGN
1207 VEIL ROAD
LEWISBURG, TN 37047
TEL: 615.833.1111
WWW.FERLISIDESIGN.COM

Permit/Seal:
BRAND M. HAMMILL
REGISTERED PROFESSIONAL ENGINEER
STATE OF TENNESSEE
No. 12919
EXPIRES 12/31/2024

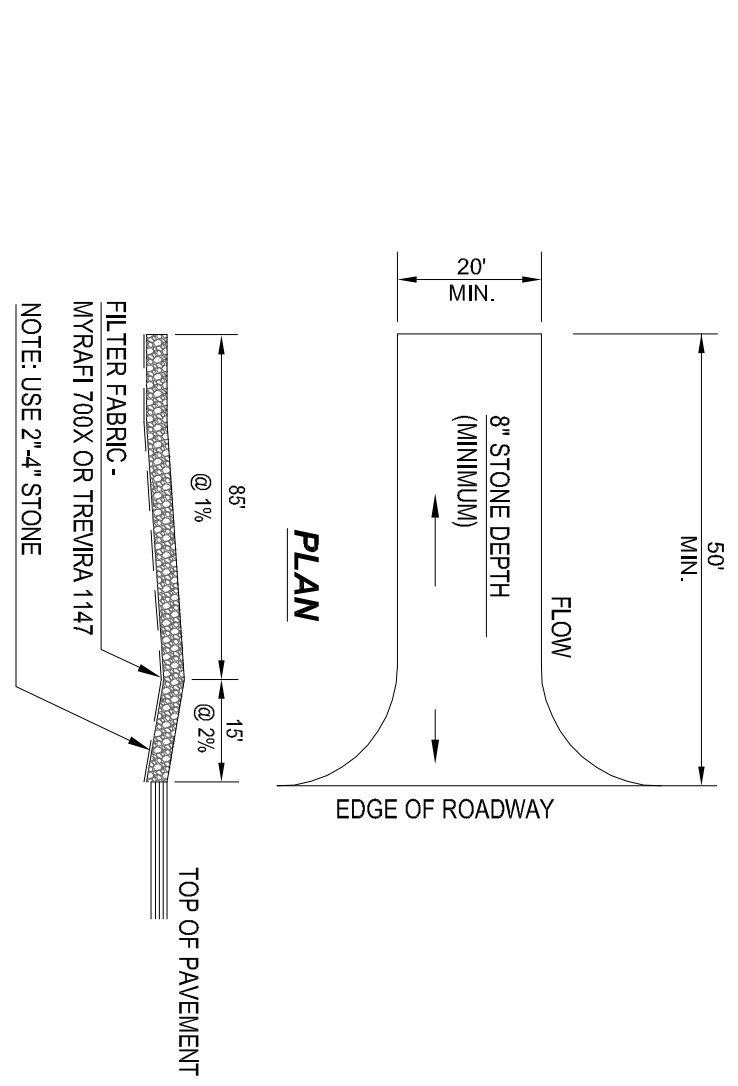
Revisions:
Item: _____ Date: _____

Designed By: DPF
Drawn By: DPF
Checked By: DPF
Date: 12/9/21

Scale: AS NOTED

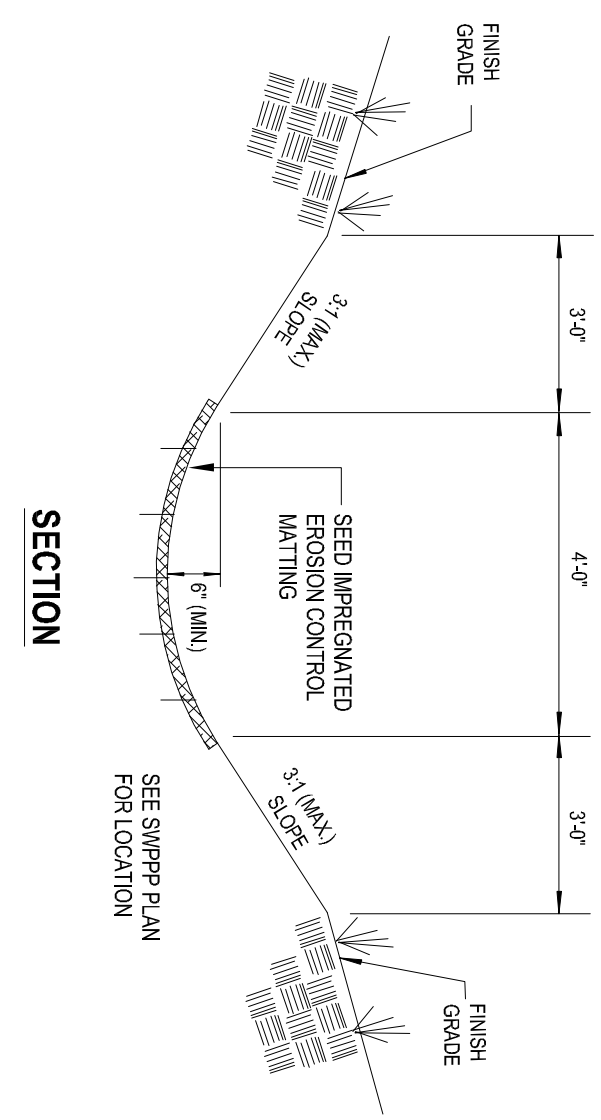
Title: MISCELLANEOUS DETAILS

Drawing No. **C3.4**

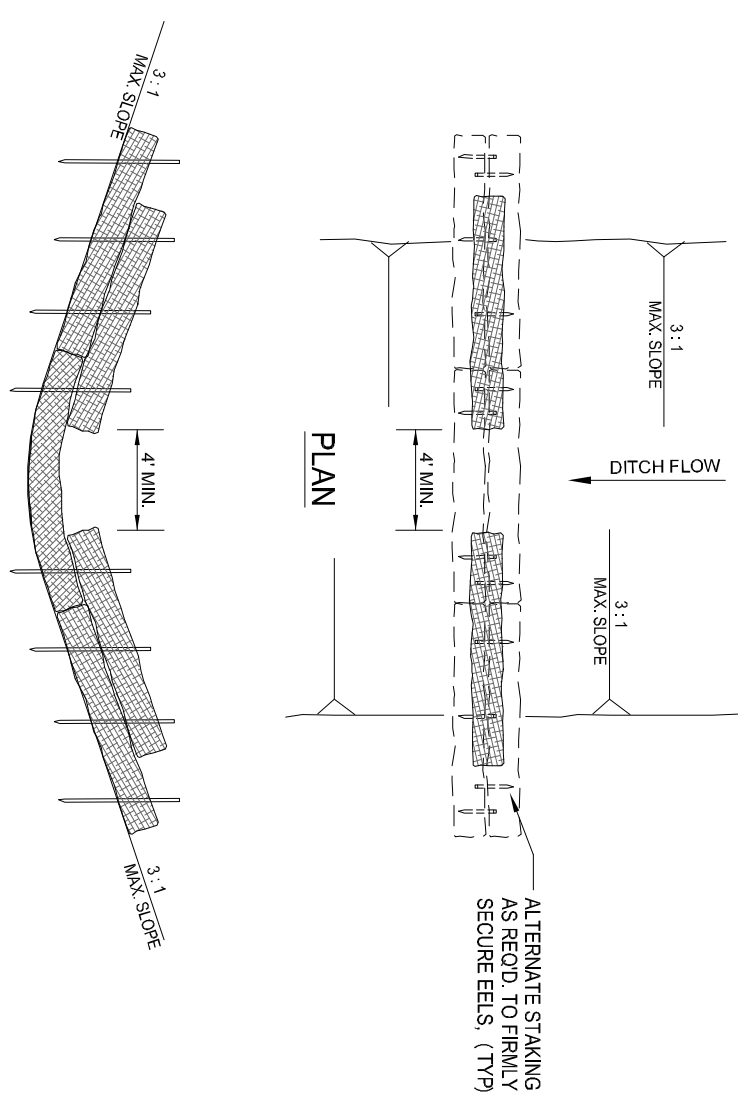


1. INSTALL A SINGLE ACCESS DRIVE USING 2-4" AGGREGATE (SEE DETAIL) PLACED OVER FILTER FABRIC. USE TO PREVENT TRACKING DIRT ONTO THE ROAD BY ALL VEHICLES.
2. MAINTAIN THROUGHOUT CONSTRUCTION UNTIL DRIVEWAY IS PAVED
3. TEMPORARY CONSTRUCTION ENTRANCE SHALL BE MAINTAINED SO AS TO PROHIBIT TRACKING OF SOILS ON TO THE ROADWAY.

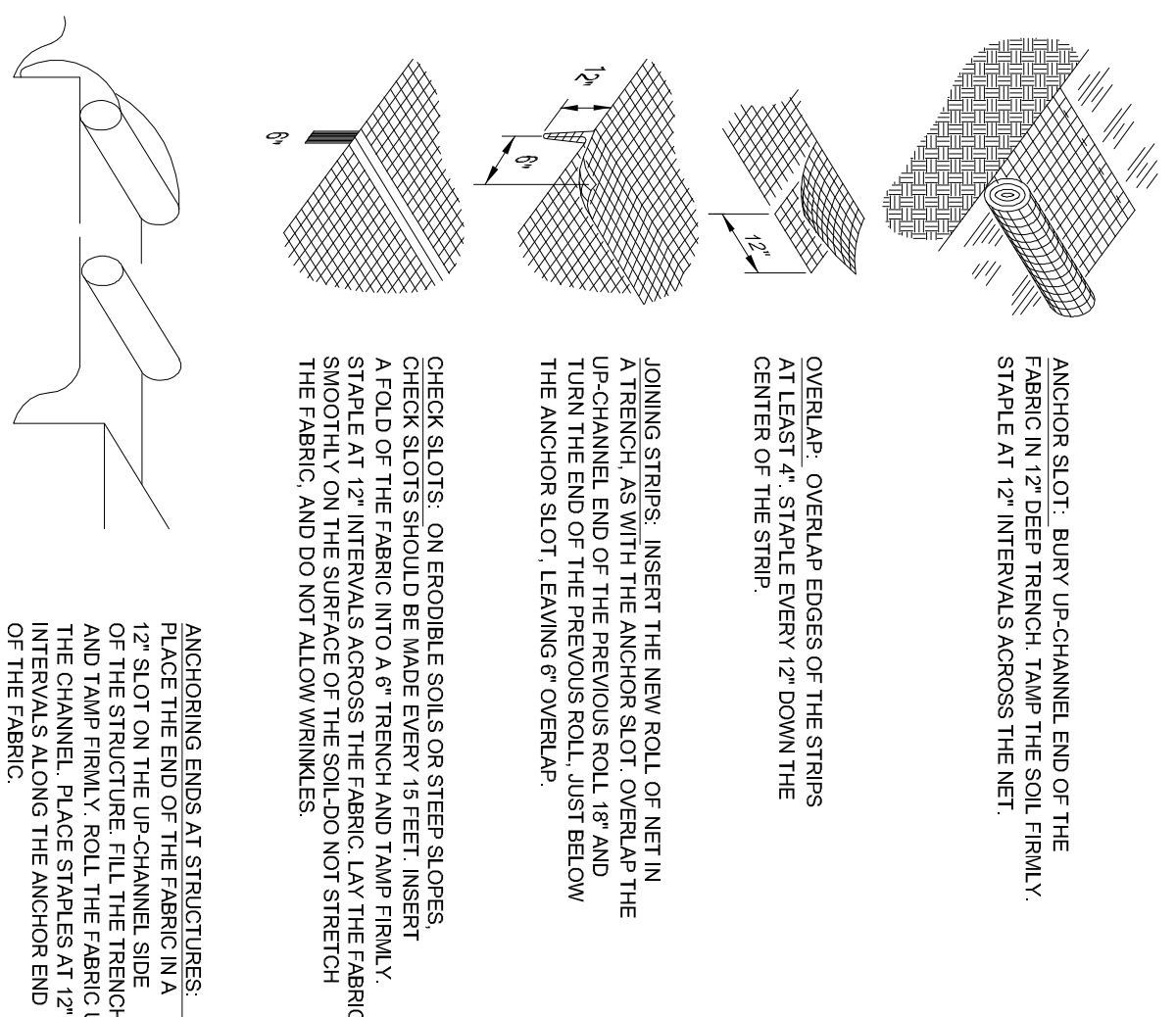
TEMPORARY CONSTRUCTION ENTRANCE (CE)
NOT TO SCALE



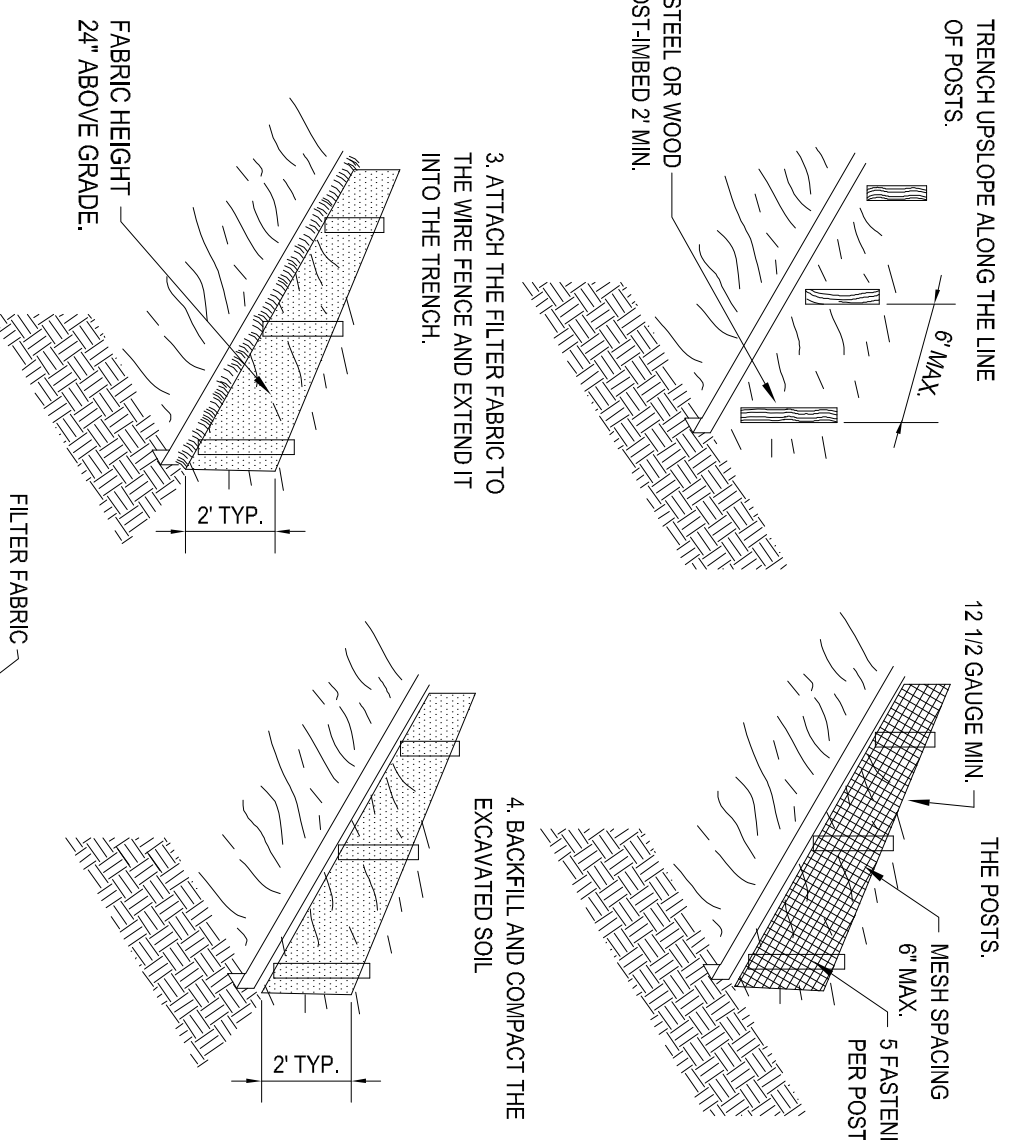
GEOTEXTILE MATTED DITCH DETAIL (GF)
NOT TO SCALE



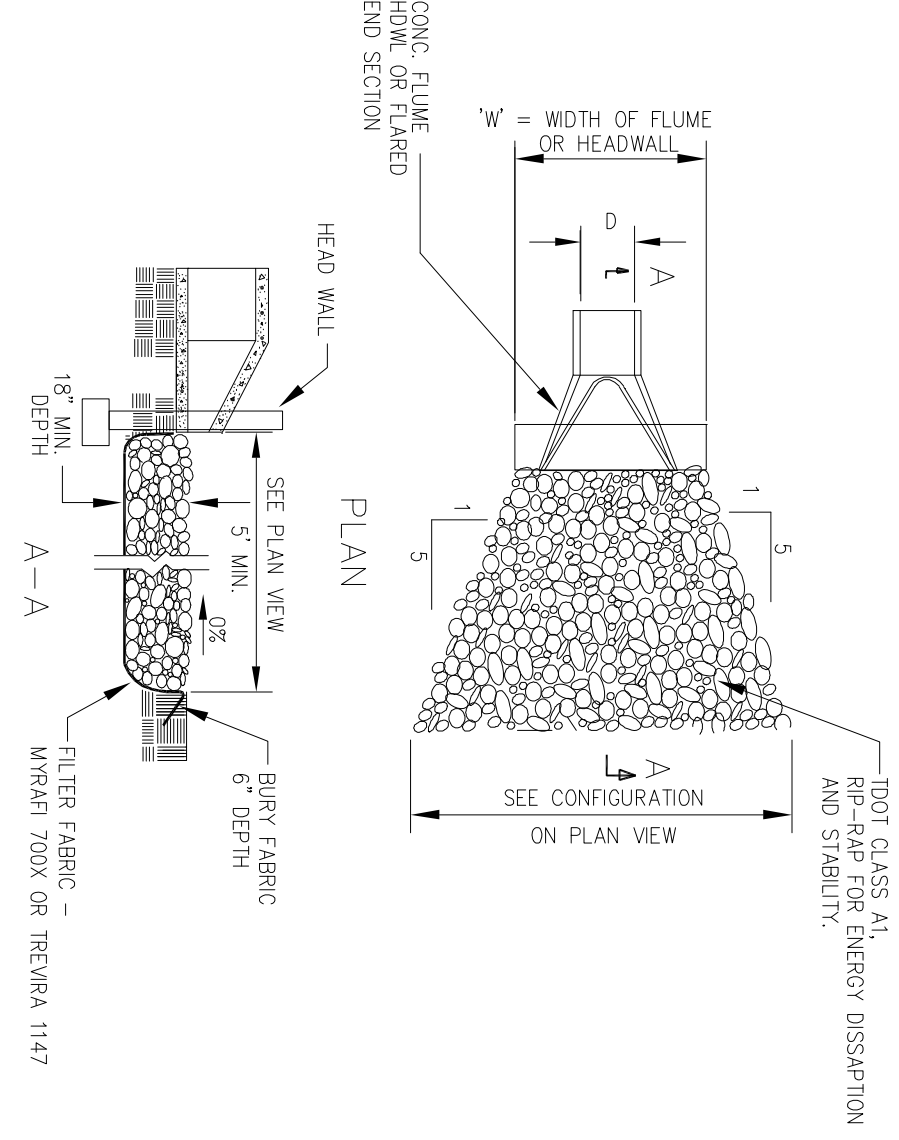
STRAW WATTLE (SW)
NOT TO SCALE



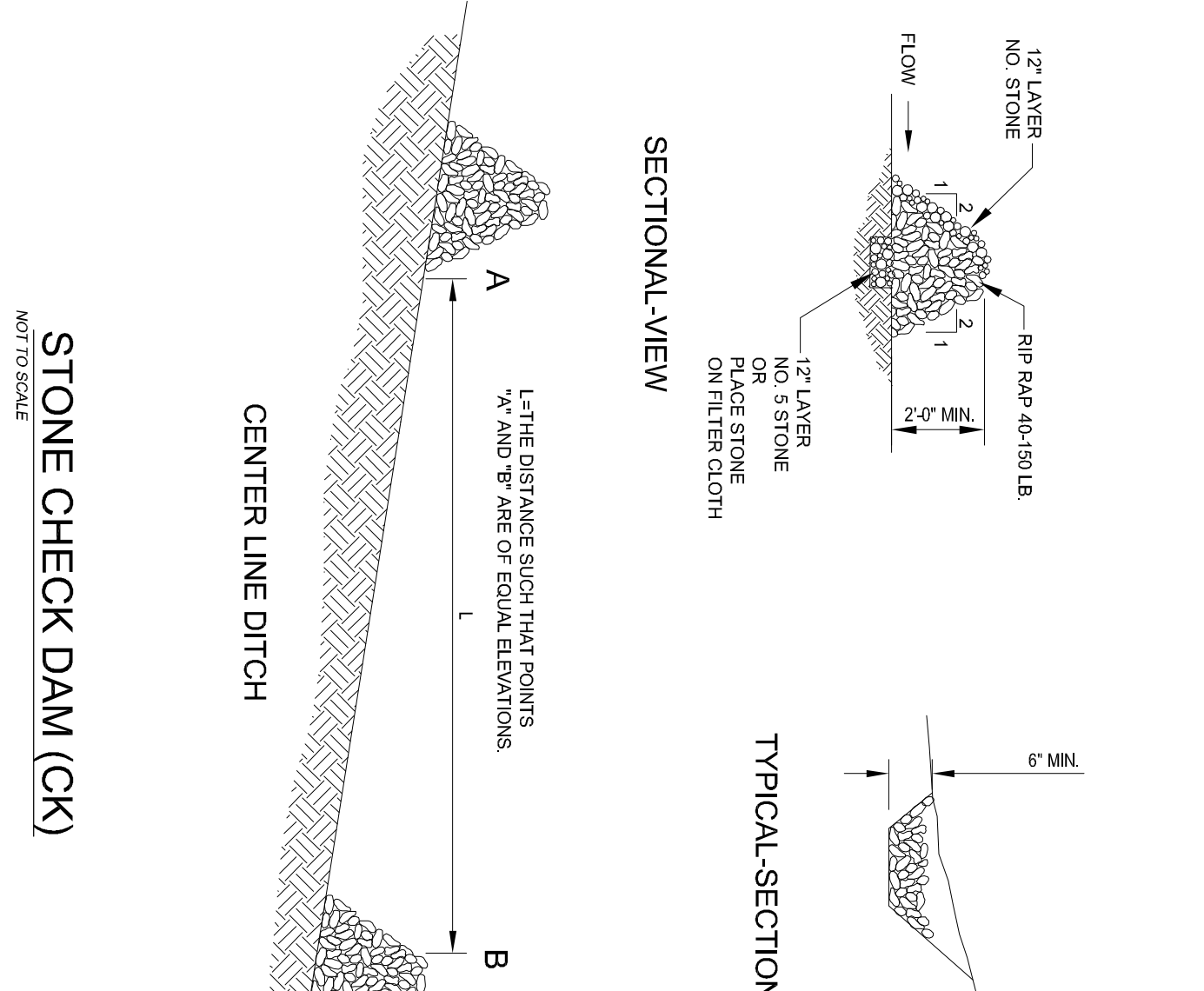
MATTED SLOPE PROTECTION (GM)
NOT TO SCALE



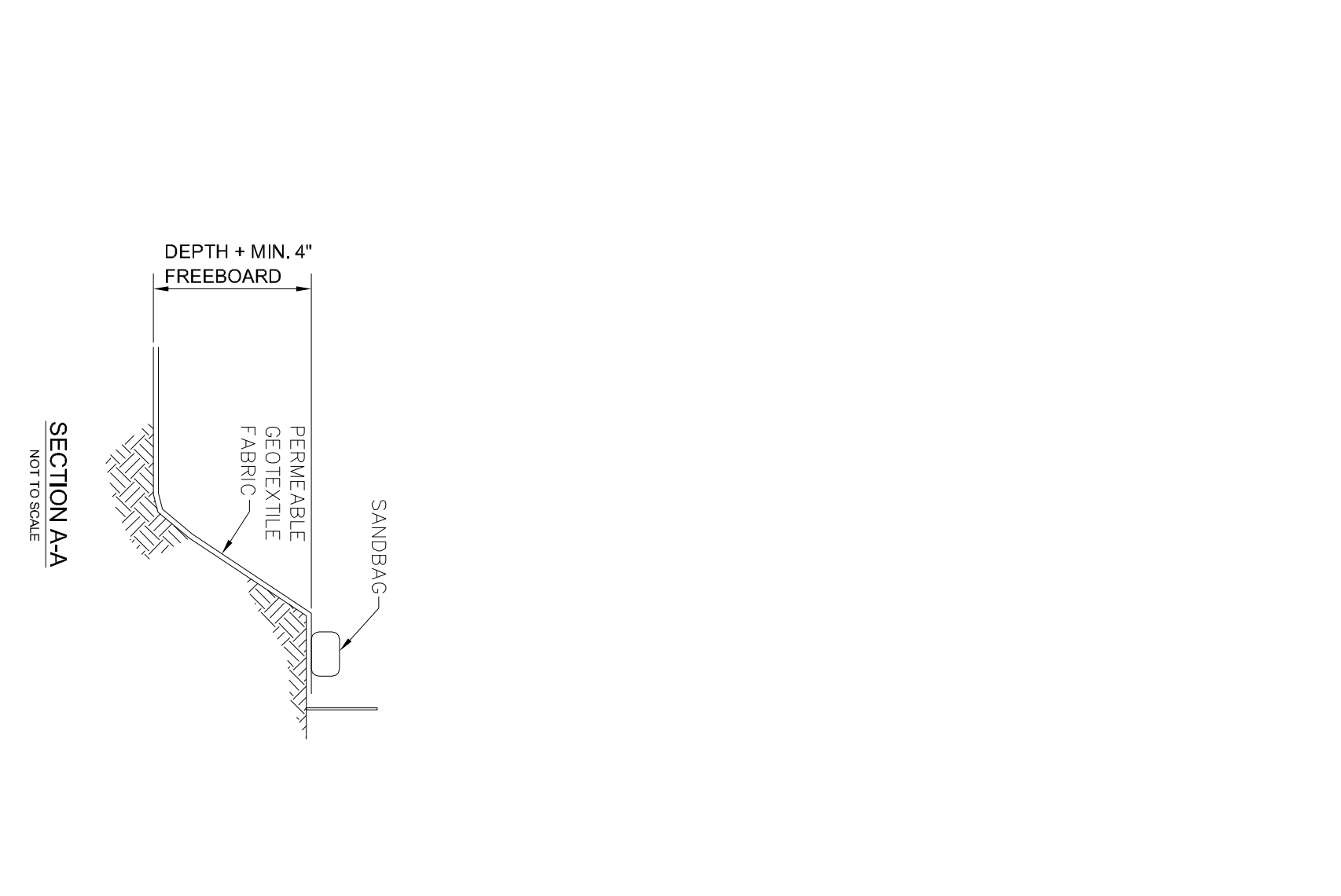
SILTING FENCING DETAIL (SF)
NOT TO SCALE



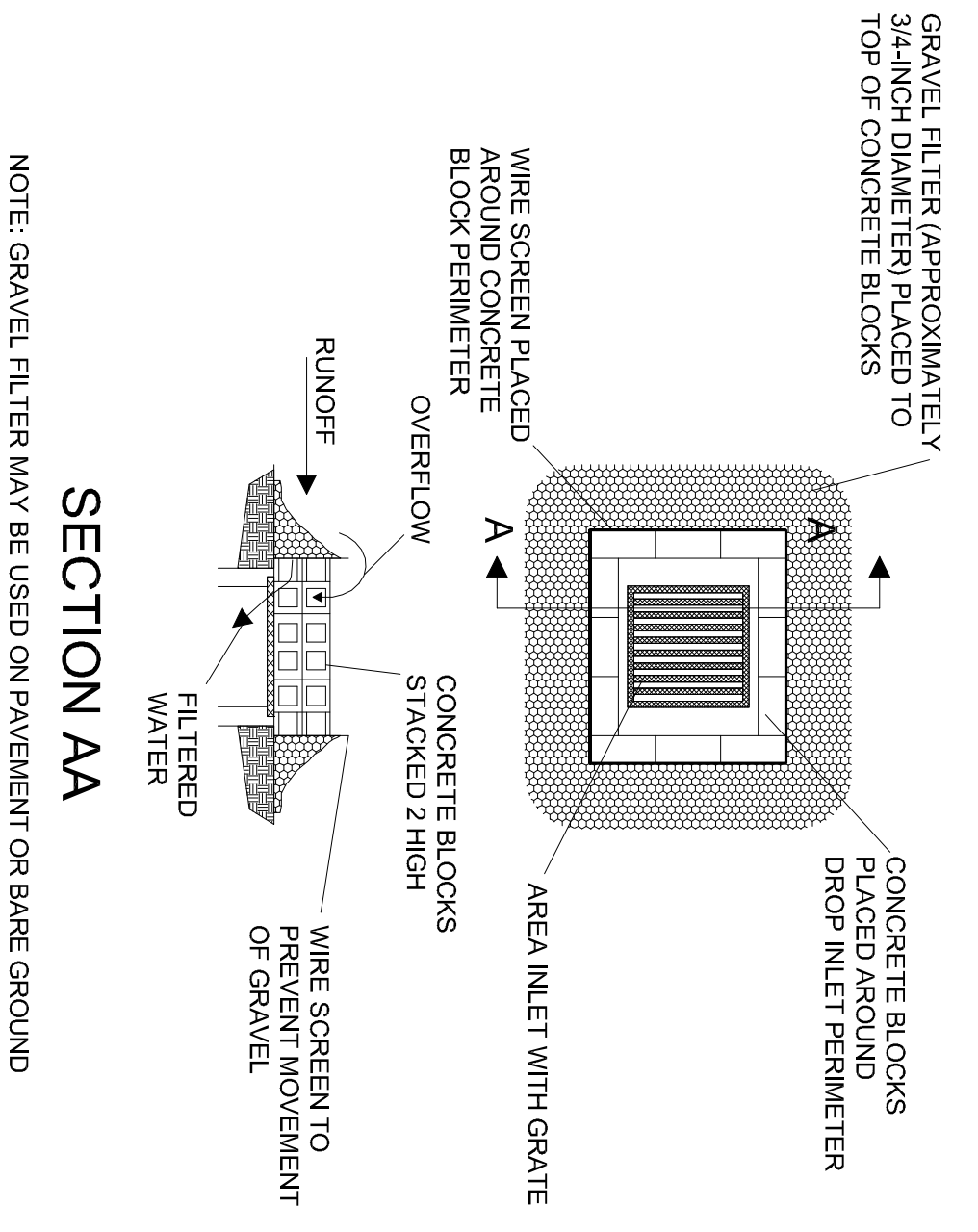
OUTLET PROTECTION DETAIL (OP)
NOT TO SCALE



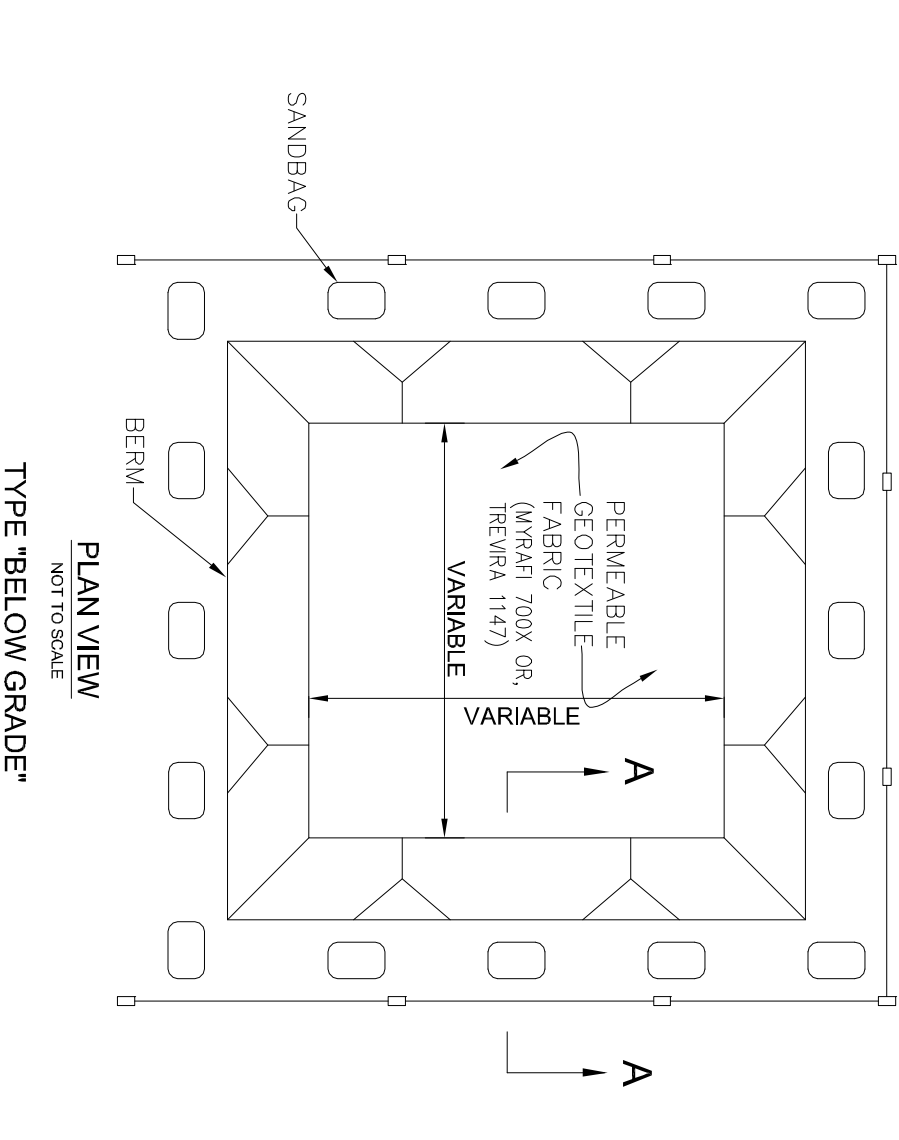
STONE CHECK DAM (CK)
NOT TO SCALE



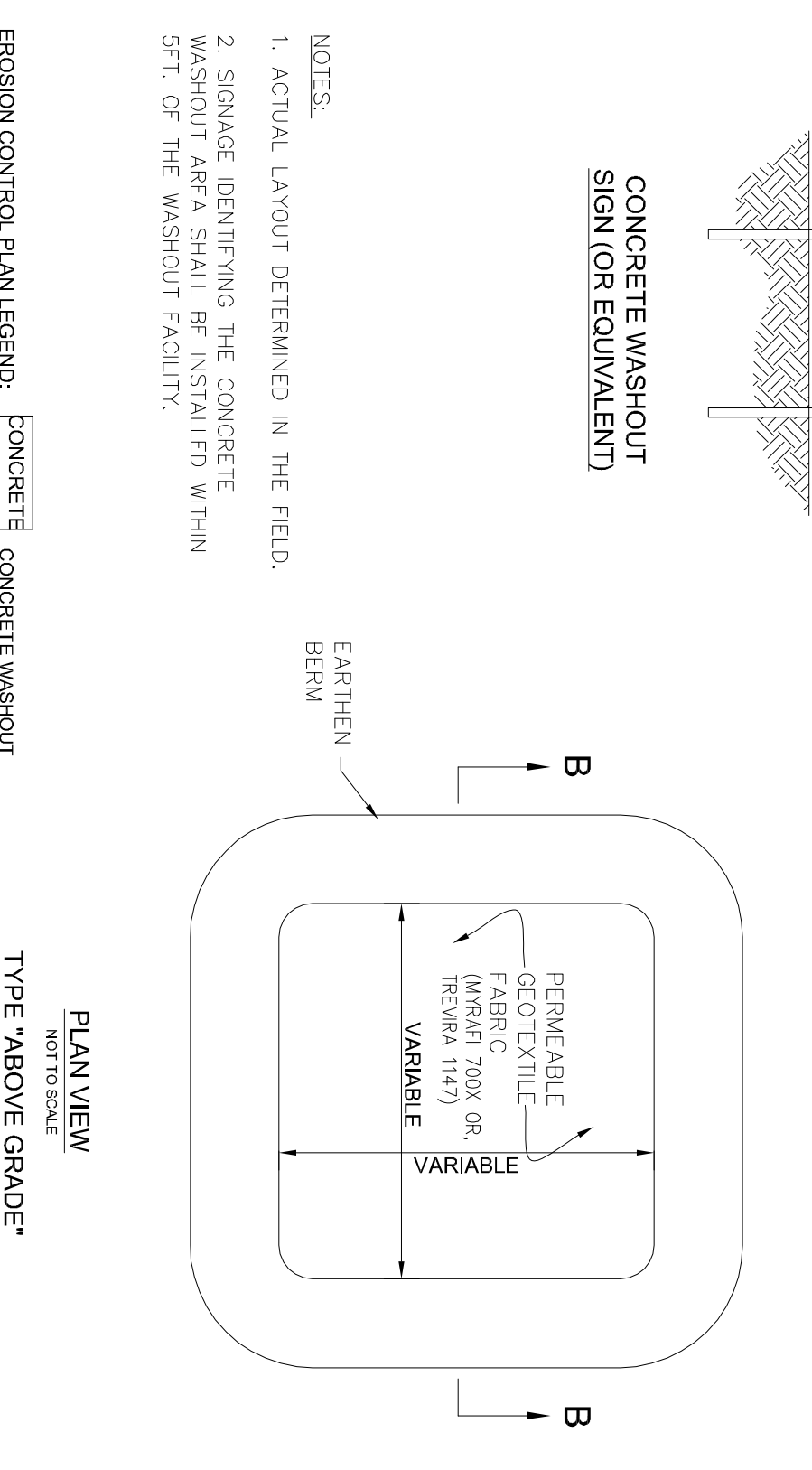
STONE FILTER RING AT HEADWALL (FR)
NOT TO SCALE



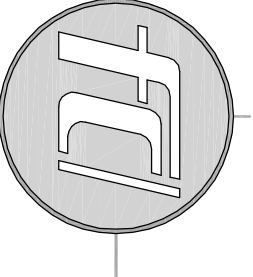
INLET PROTECTION DETAIL (IP)
NOT TO SCALE



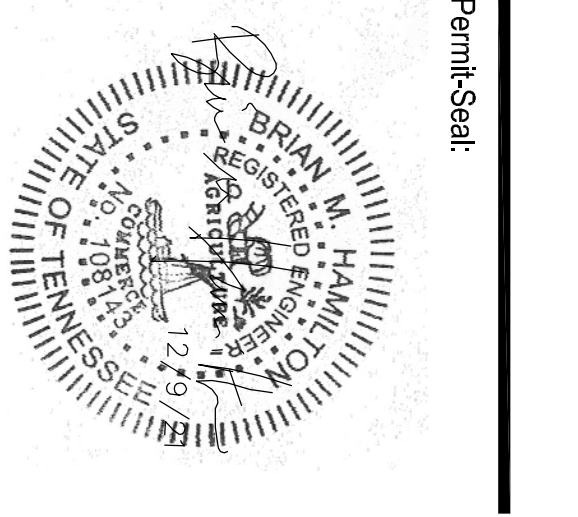
CONCRETE WASHOUT DETAIL (CW)
NOT TO SCALE



CONCRETE WASHOUT DETAIL (CW)
NOT TO SCALE



Ferlisi
Civil Design
Consulting & Design Services
P.O. Box 1000
Lewisburg, TN 37078
www.ferlisi.com



Client/Project:

Josh King Excavation
3484 Osella Road
Cornersville, TN 37047

King's Landing
Townhome Development
1207 7th Road
3rd Civil District
Lewisburg, Marshall County, TN

Revisions:
Item: Date:

Project No.:

Designed By: DPF
Drawn By: DPF
Checked By: DPF
Date: 12/9/21

Scale: AS NOTED
Title: MISCELLANEOUS DETAILS

Drawing No.

C3.5