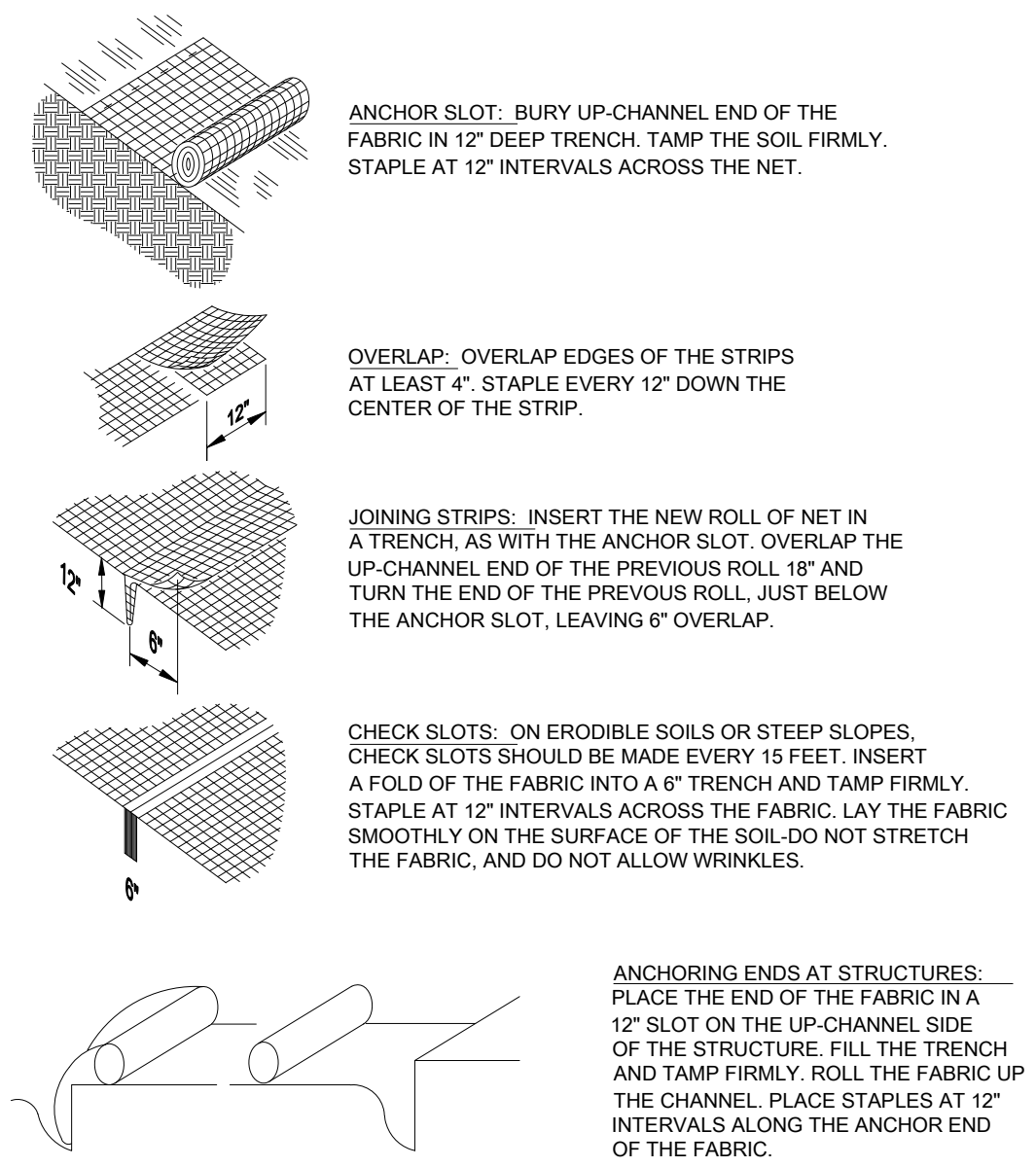
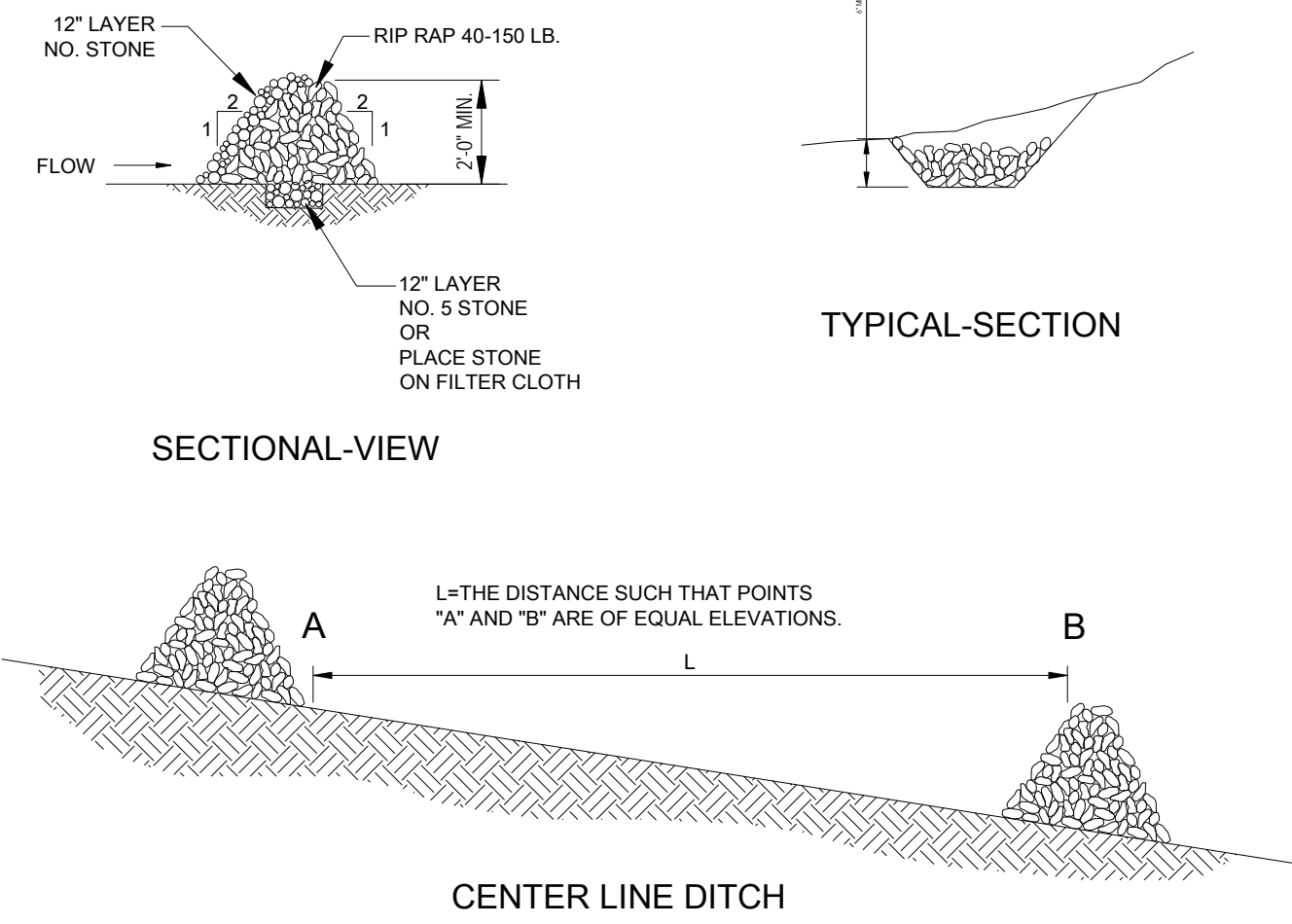


1. INSTALL A SINGLE ACCESS DRIVE USING 2"-4" AGGREGATE (SEE DETAIL) PLACED OVER FILTER FABRIC. USE TO PREVENT TRACKING DIRT ONTO THE ROAD BY ALL VEHICLES.
3. MAINTAIN THROUGHOUT CONSTRUCTION UNTIL DRIVEWAY IS PAVED
4. TEMPORARY CONSTRUCTION ENTRANCE SHALL BE MAINTAINED SO AS TO PROHIBIT TRACKING OF SOILS ONTO THE ROADWAY.

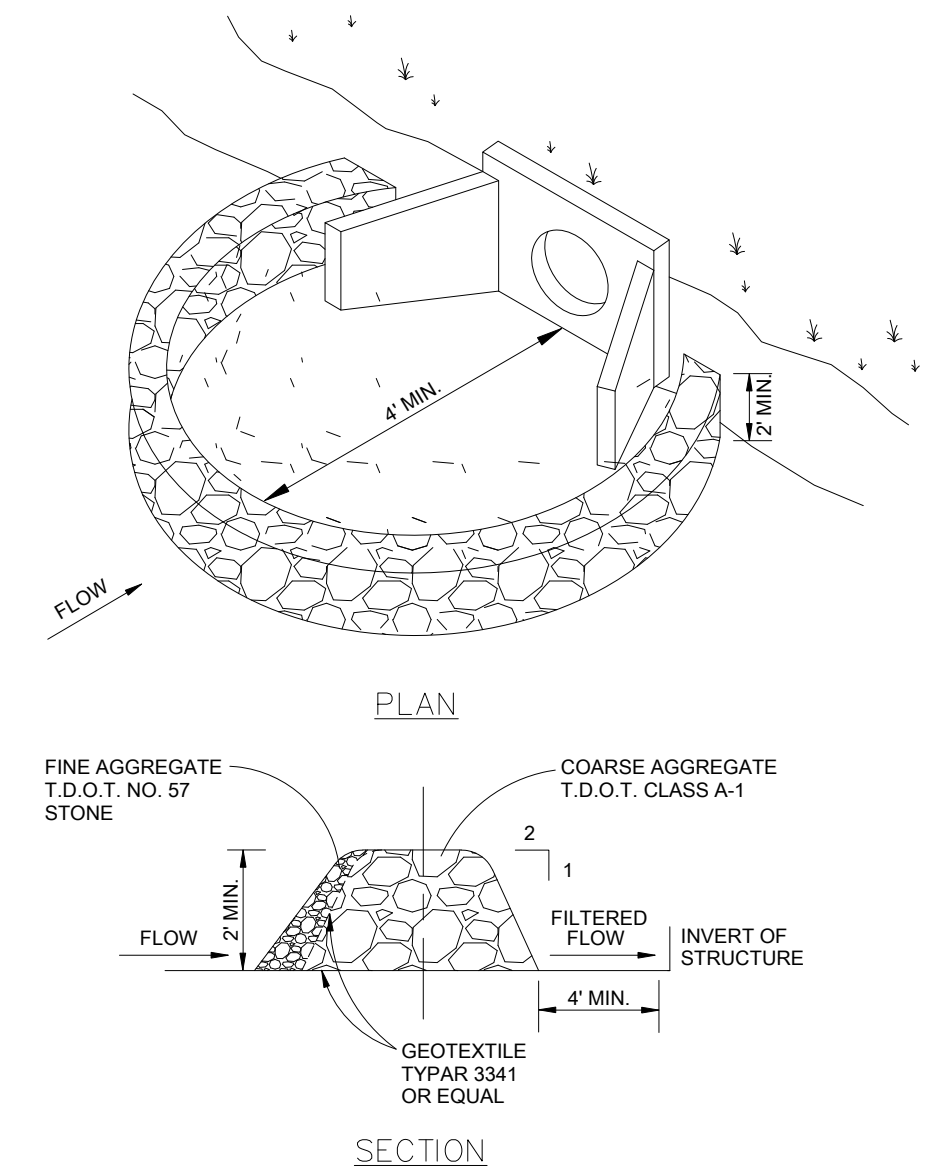
**TEMPORARY CONSTRUCTION ENTRANCE (CE)**  
NOT TO SCALE



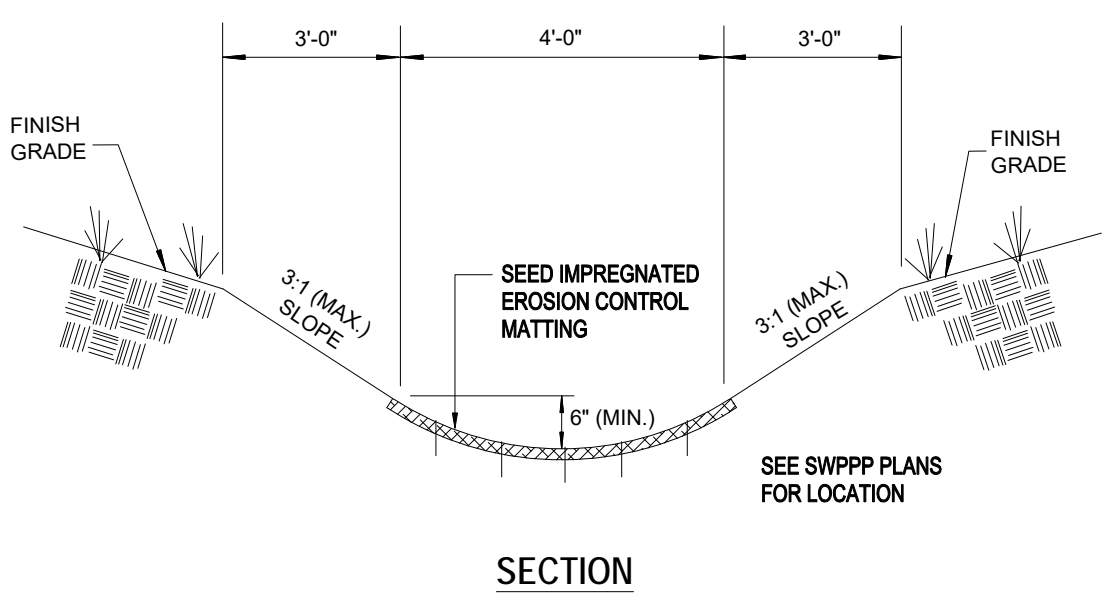
**TCP-9 & TCP-10  
GEOGRID  
MATTED SLOPE PROTECTION (GM)**  
NOT TO SCALE



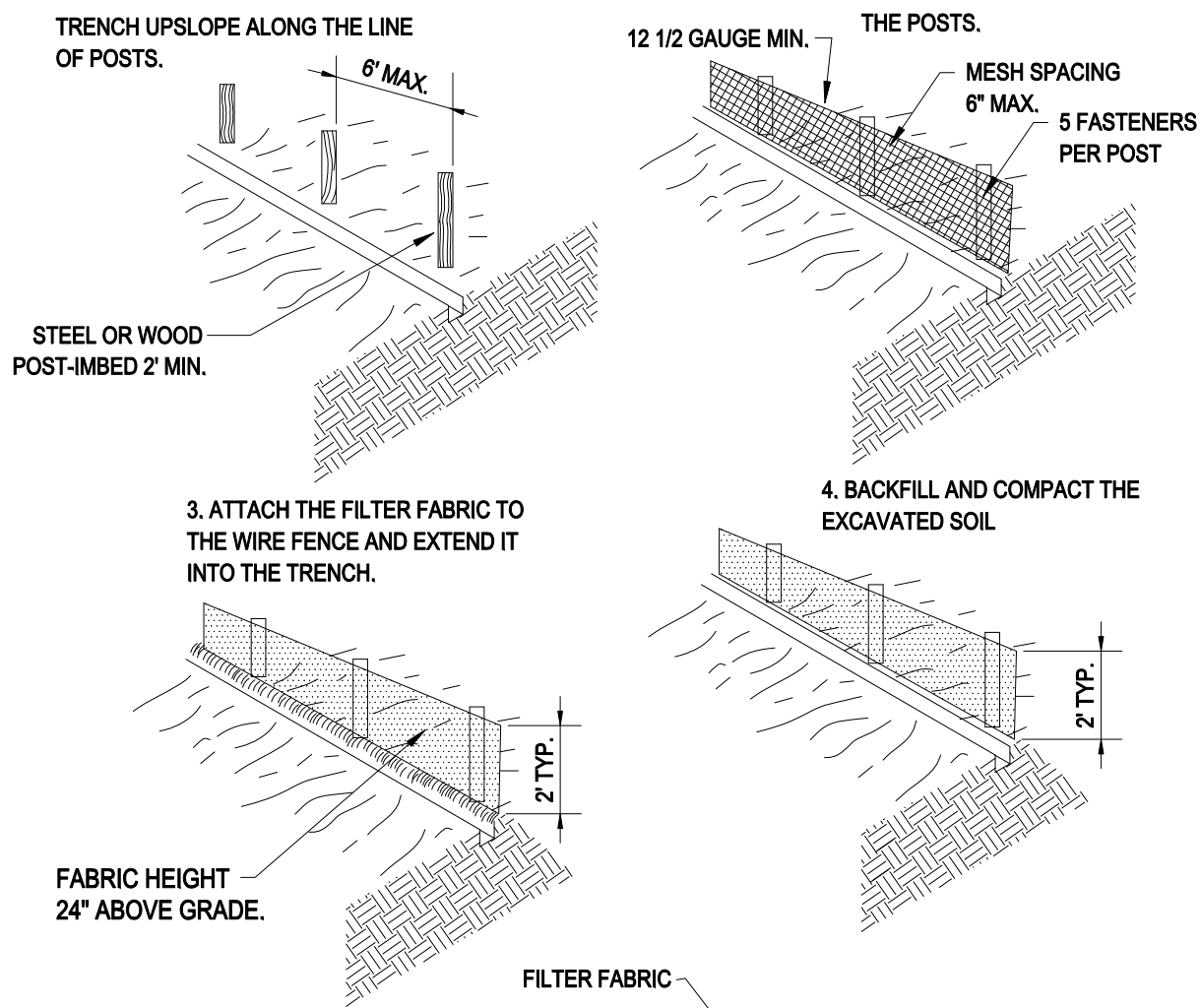
**STONE CHECK DAM (CK)**  
NOT TO SCALE



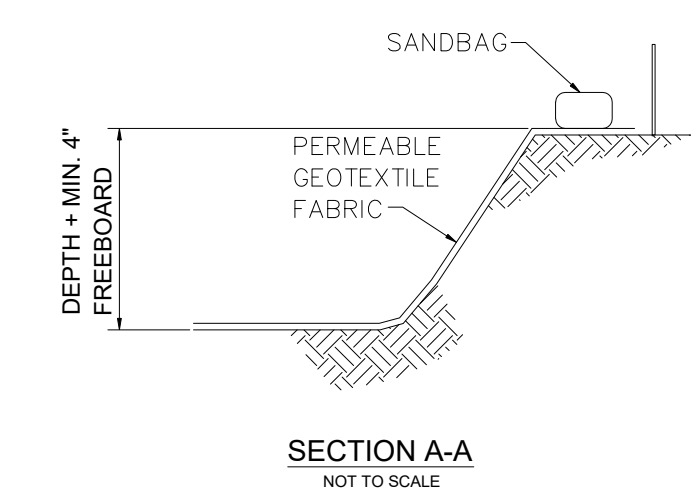
**STONE FILTER RING AT HEADWALL (FR)**  
NOT TO SCALE



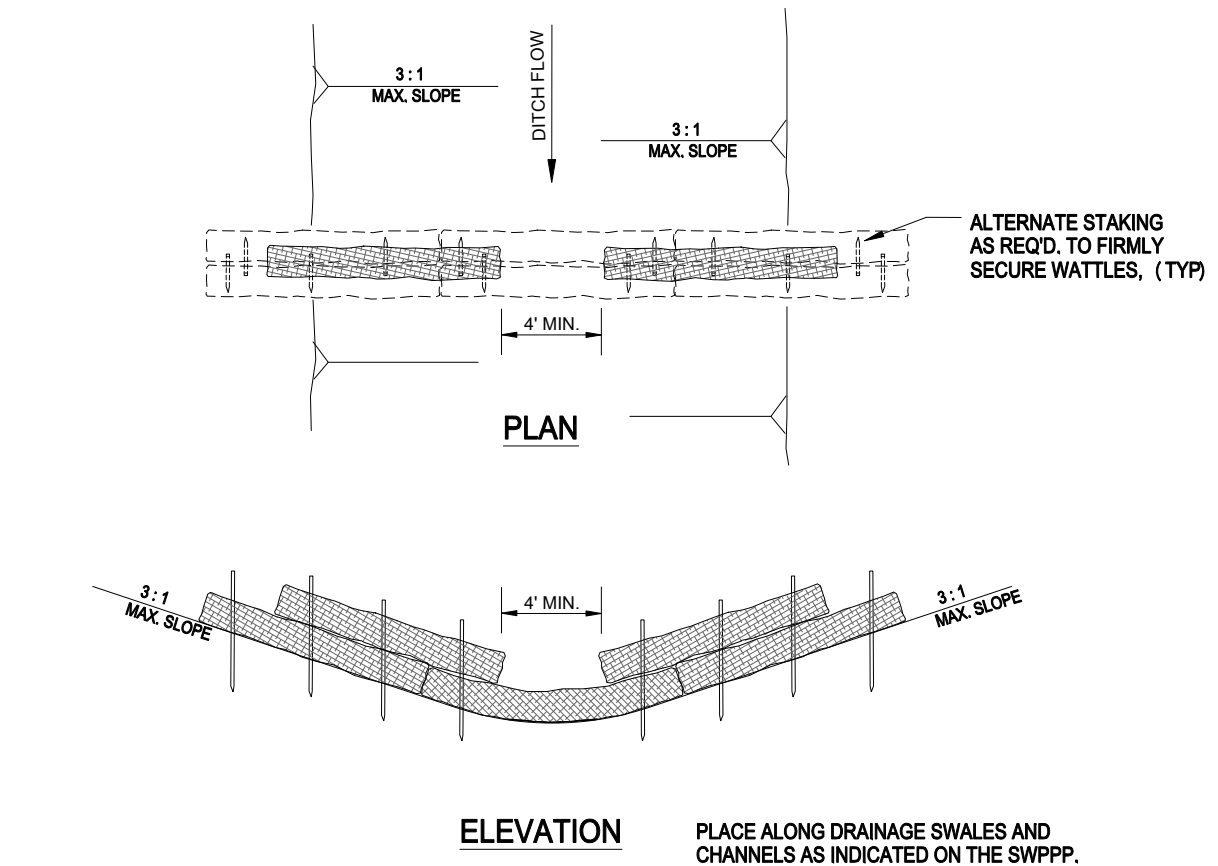
**GEOTEXTILE MATTED DITCH DETAIL (GF)**  
NOT TO SCALE



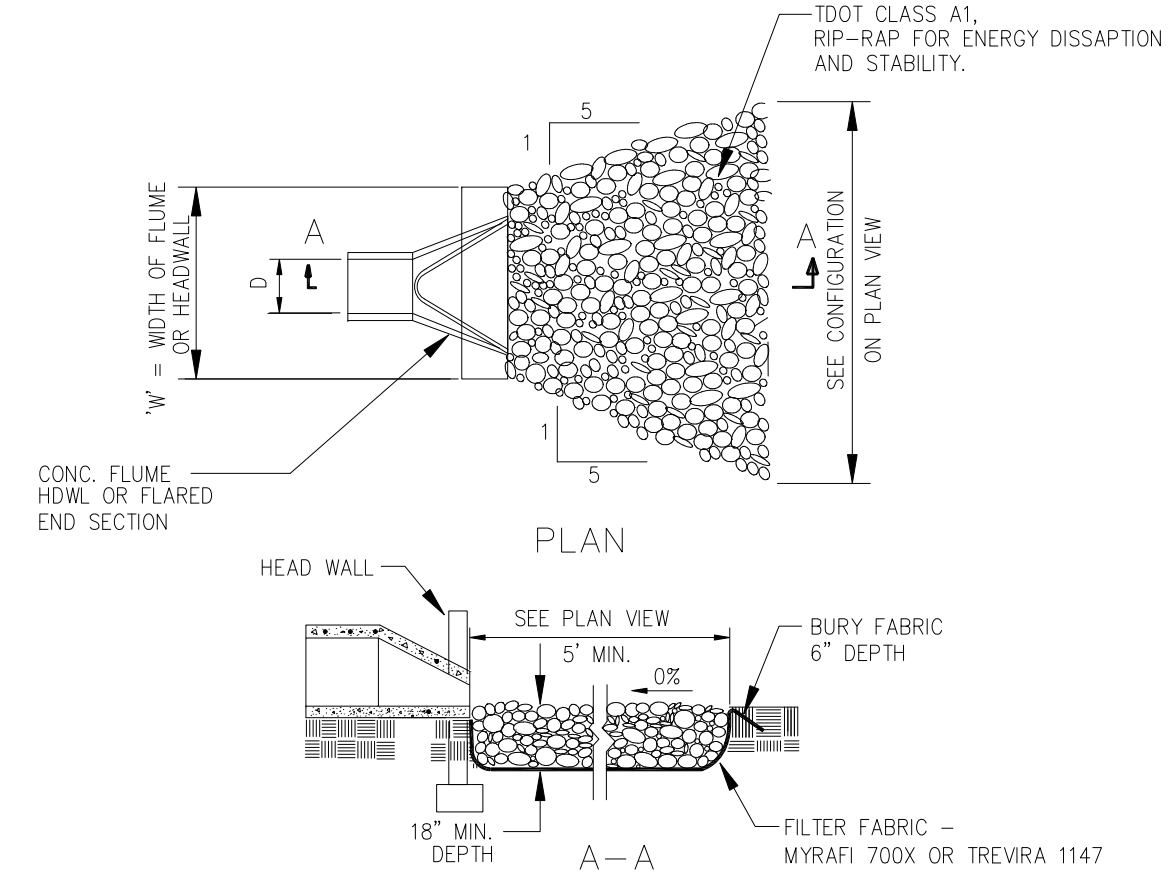
**SILTATION FENCING DETAIL (SF)**  
NOT TO SCALE



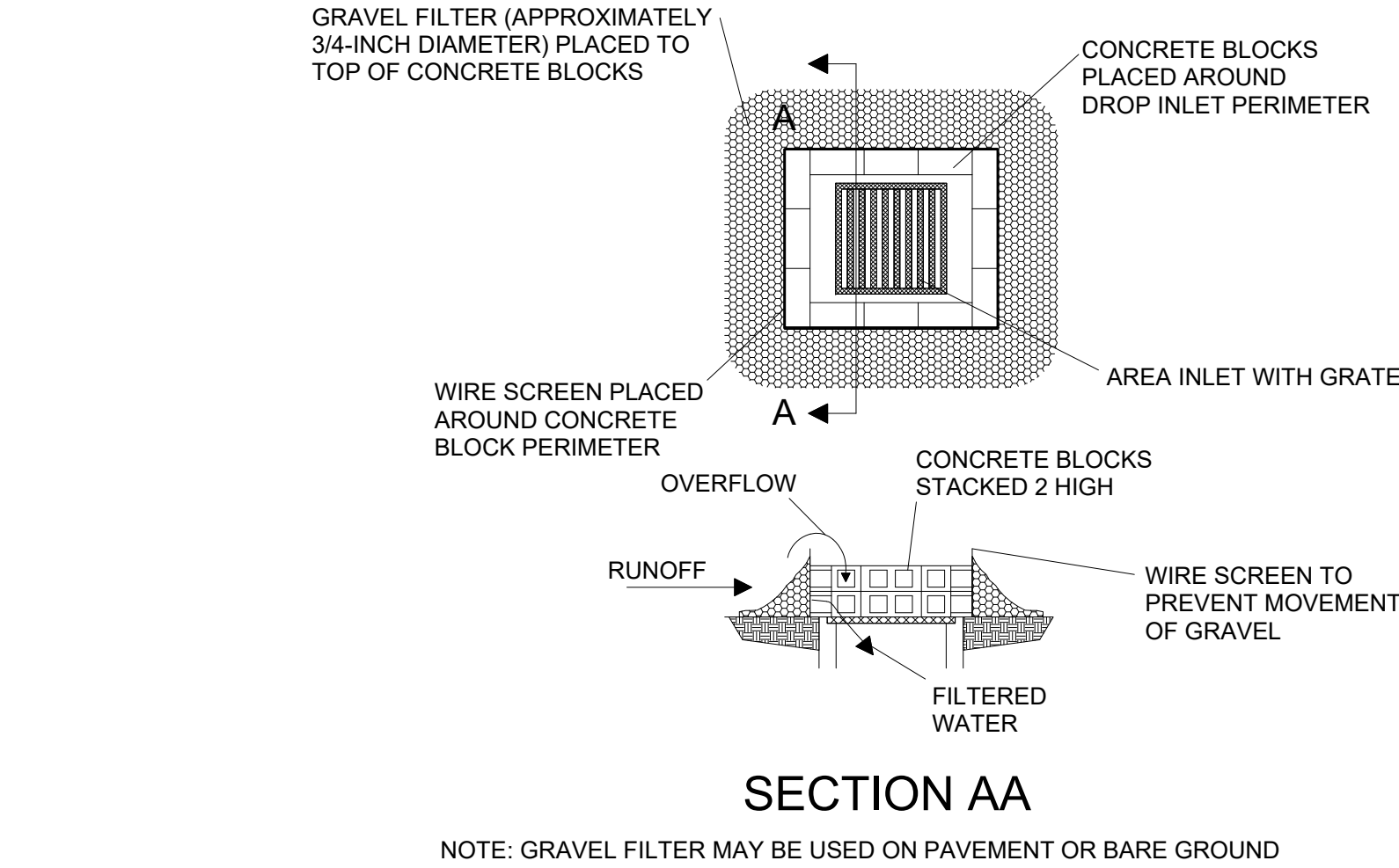
**INTLET PROTECTION DETAIL (IP)**  
NOT TO SCALE



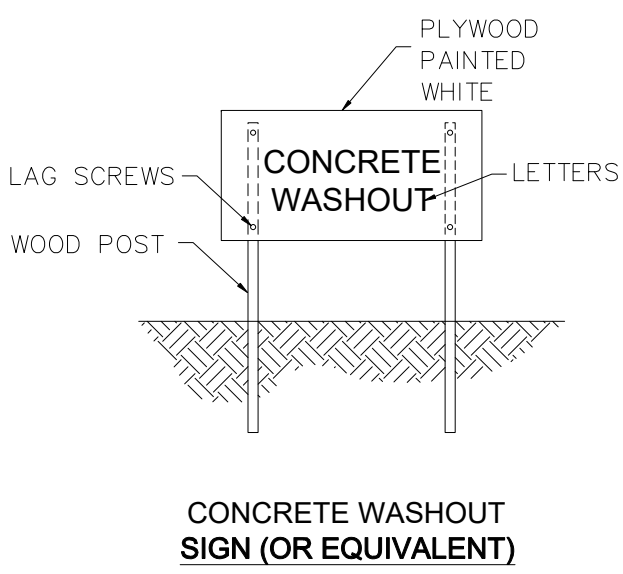
**STRAW WATTLE CHECK DAM (SW)**  
NOT TO SCALE



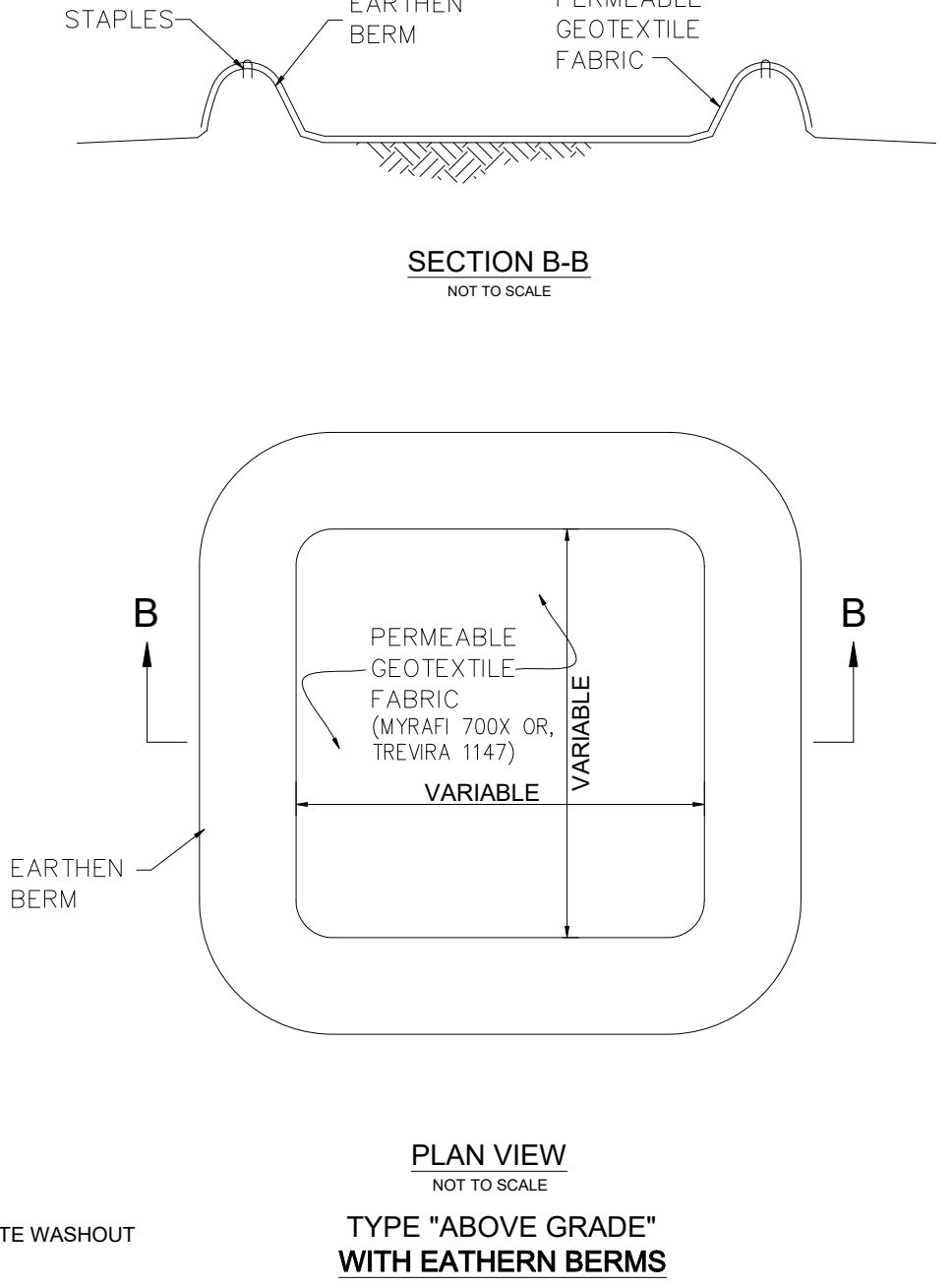
**OUTLET PROTECTION DETAIL (OP)**  
NOT TO SCALE



NOTE: GRAVEL FILTER MAY BE USED ON PAVEMENT OR BARE GROUND

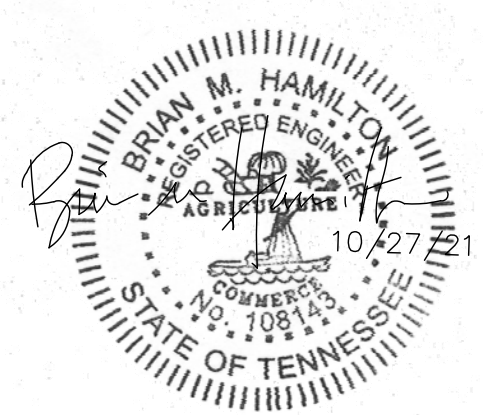


**CONCRETE WASHOUT DETAIL (CW)**  
NOT TO SCALE



**TYPE \"/>**

Permit-Seal:



Client/Project:

Cameron Coble  
1028 Nashville Highway  
Lewisburg, TN 37091

Hulshof Grove  
Section 1  
3rd Civil District  
Lewisburg, Marshall County, TN

Revisions:

Item: Date:

Project No.:

Designed By: DPF  
Drawn By: DPF  
Checked By: BH  
Date: 10/27/21

Scale: AS NOTED

Title:  
MISCELLANEOUS  
DETAILS

Drawing No.

**C3.2**